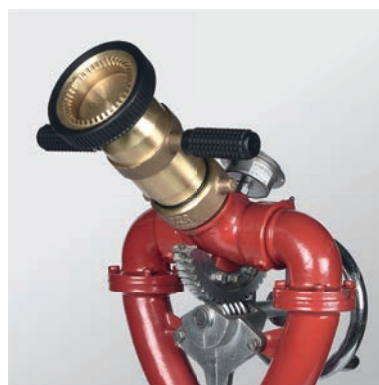


YOOKSONG

PRODUCT CATALOGUE



**FIRE
FIGHTING
EQUIPMENT**





Greetings

We, YOOKSONG, are giving our full efforts to make people secure as a firefighting equipment manufacturer since 1990.

As a leading company of fire industry in Republic of Korea, we always put our constant efforts and invest continuously in order to produce world's first class quality products under the company's main values, 'Challenge' and 'Progress' We promise to always provide best quality and eco-friendly firefighting equipments to you. Thank you.

THE HISTORY OF YOOKSONG



1990

- 1990. YOOKSONG Co., Ltd. established
- 1995. Constructed 1st factory
- 1996. Started manufacture Fire equipment



2010

- 2011. Commendation by Prime minister of ROK
- 2013. ISO 9001
- 2016. Commendation by Governor of Gyeonggi-do Province
- 2018. Award a prize (Prime Minister)



2000

- 2000. UL/ULC approved (Butterfly Valve)
- 2005. Commendation by NFA(National Fire Agency)



2020

- 2020. Started sales to Philippine BFP
- 2020. Commendation by Prime minister
- 2020. Commendation by Minister of Ministry of Trade, Industry and Energy
- 2020. CE approved (E-FIRE SOLUTION)
- 2020. Seoul International Invention Fair (Gold Prize)
- 2021. CE approved (FIRE MONITOR)

E-FIRE SOLUTION



Alarm System (Limit switch version)

E-FIRE SOLUTION (BIG SIZE) / FK-5-1-12

E-FIRE SOLUTION

YOOKSONG's <E-FIRE SOLUTION> will extinguish any fire from electricity switch/panel board. It can watch 24/7 inside of board and cabinet and when fire comes or high temperature, extinguish with fastest way.



1 Who am I?

1. I am easy to install, and no need to maintenance.
2. I am watch 24/7 without any risk or electricity. Even if you can not check, we ready to work anytime.
3. I am small, however when we work, we spread 70 times bigger and extinguish any fire comes from fire spot. Prevent huge fire disaster, harmless to people, and no secondary damage by extinguish agent.

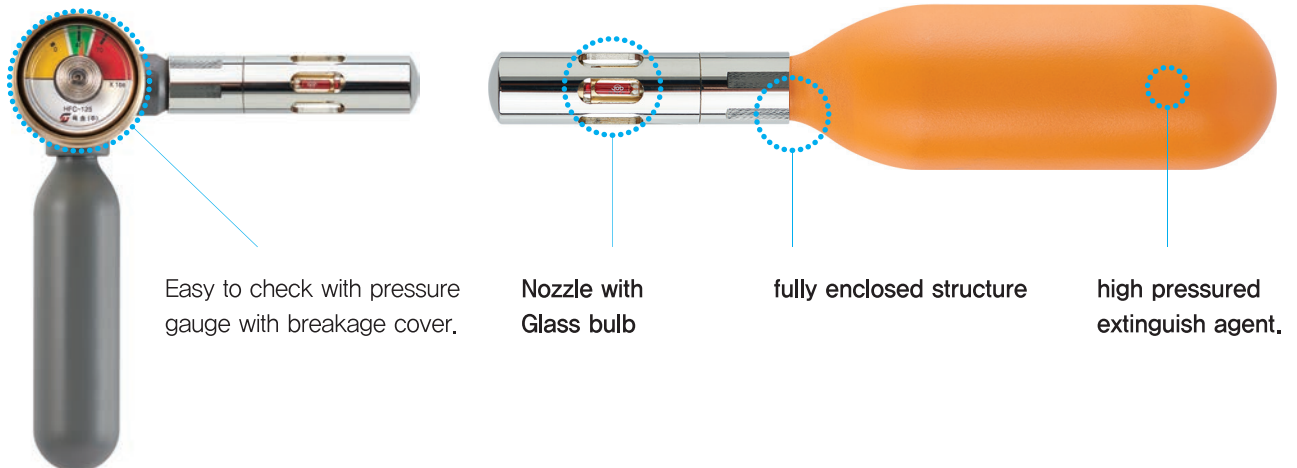
2 SPECIFICATION

MODEL NO.		YSS-40	YSS-120	YSS-360
1. Volume (m ³)		0,03	0,09	0,25
2. Class		A / B / C		
3. Installation temperature		-20 °C ~ 40 °C (with high temperature glass bulb, it can be change)		
4. Working temperature(Glass bulb)		Glass bulb type 57 / 68 / 79 / 93 (°C)		
5. Agent		HFC-125 (UL certification) Pressured by N ₂		
6. Size (mm)	I-type	25 X 168	40 X 192	40 X 328
	L-type	25 X 123	40 X 152	40 X 255
7. Agent amount		20g	60g	170g
8. Certification		KFI / CE / UL (Agent)		

E-FIRE SOLUTION

③ How it works and components.

Perfectly small and light.



Normal stance



Glass bulb breaks



Extinguish fire

1. When fire comes from inside of panel board or switch board, glass bulb catches automatically temperature.
2. Glass bulb breaks
3. Hard and sharp spring pin hits the cylinder
4. Agent comes out real fast from the small cylinder and spread inside of fire spot.
5. extinguish in 3~5 sec.

④ Installation spot.



Normal buildings

Electricity panel board installed where Family houses, Apartment, Office building, and other complex building.



Plant industry

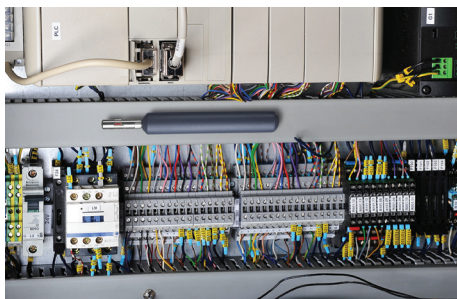
Oil plant, Nuclear power plant etc.



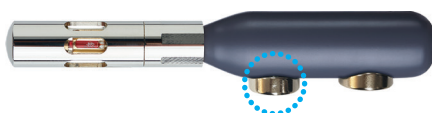
Factory, Special building, Downtown store etc.

E-FIRE SOLUTION

5 How to install?



Specially designed magnet for easy attachment.

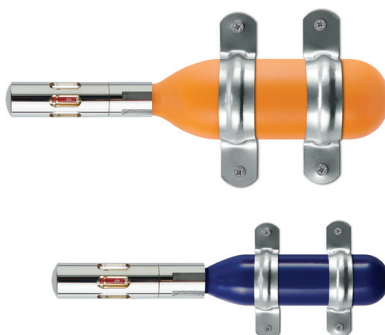


Special saddle (where you can not use magnet) tying with cable tie.





A special bracket to be installed in a place with high vibration.

(Must install using bolt)



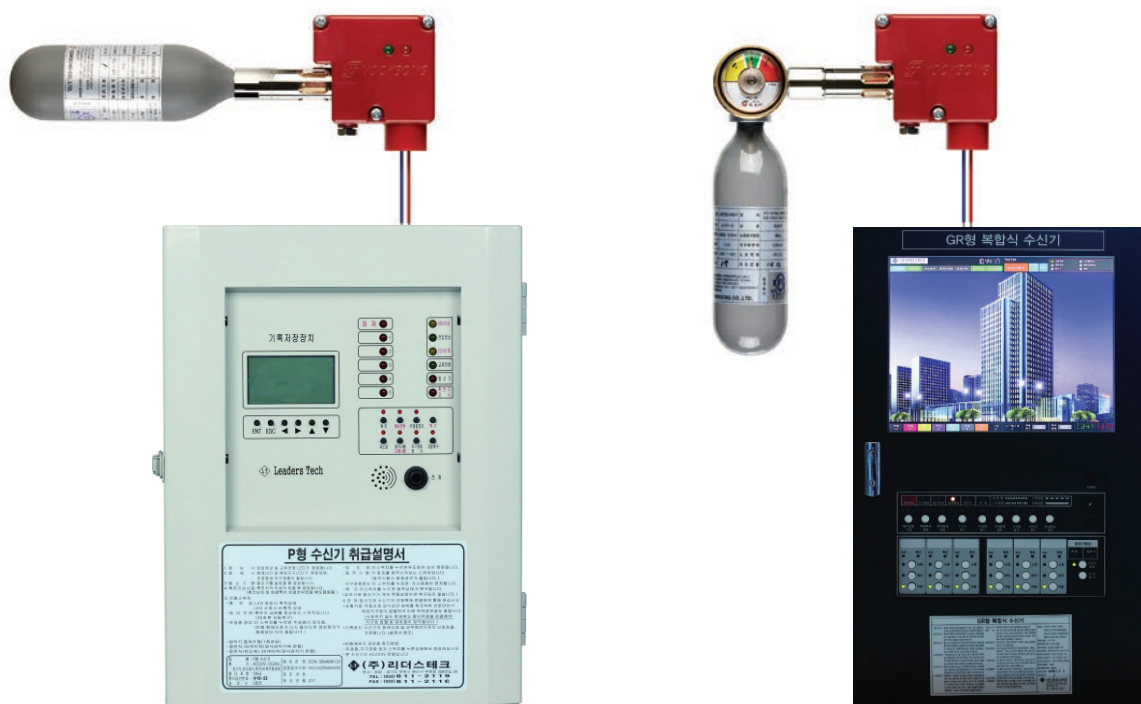
6 Comparison with Patch type extinguisher

	E-FIRE SOLUTION	Patch type extinguisher
		
1. Theory of Extinguish	Release extinguish agent directly,	Melting the Nano Capsule by fire and extinguish
2. Class	A, B, C	A, B, C
3. Volume (m3)	0,03 / 0,09 / 0,25	0,03 / 0,09 / 0,25 ~ 0,28
4. Installation	Strong magnet / Bracket fix	Sticker
5. Certification	KFI / UL / CE	KFI
6. Working Temperature	68°C Operating Glass bulb	No degree, only fire occurs
7. Resistant of Humidity	It is very resistant to humidity.	It is very weak to humidity.
8. Rechargeable	Yes	No
9. Checkable expiration	Yes (by pressure gauge)	No

E-FIRE SOLUTION

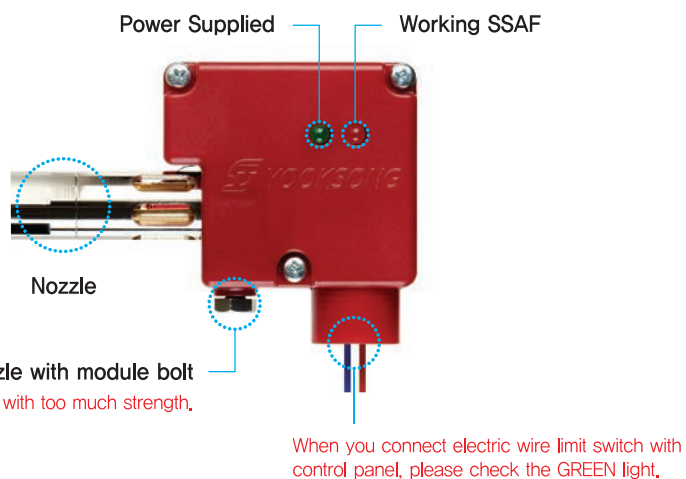
7 Alarm System (Limit Switch Version)

This module has 〈Limit Switch〉 just same as 〈Tamper Switch〉. You can connect this module to any Fire Alarm control panel. So when SSAF works, spring damper hits the limit switch, then it cuts the electricity and immediately gives alarm to control panel.



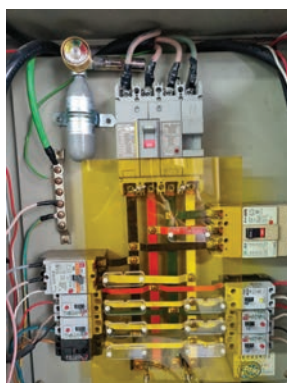
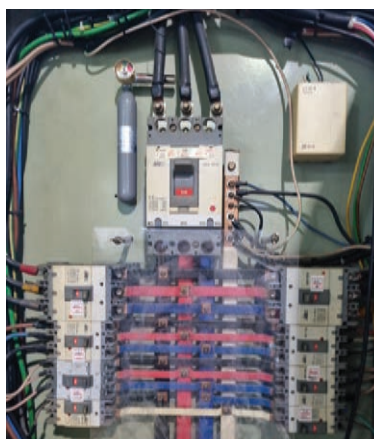
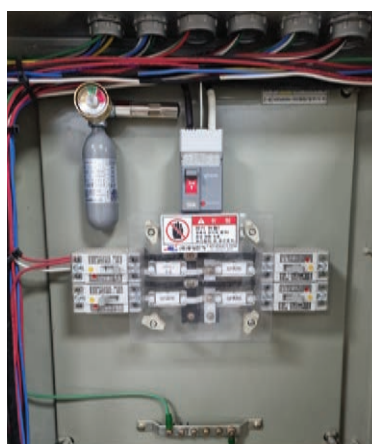
Power – DC 24V (basic)
 〈If you need AC version it is custom order〉

Material : ABS
Holding type : Bolt and Nut



E-FIRE SOLUTION

INSTALLATION SAMPLE PHOTOS



E-FIRE SOLUTION

■ E-FIRE SOLUTION (BIG SIZE) / FK-5-1-12

This one is bigger version of original (E-FIRE SOLUTION) so it can extinguish bigger space of fire.



YSS-1000F



with Limit Switch Box

What are the good things about YSS-1000F?

1. Al-alloy cylinder light weight and no worry for corrosion.
2. An environmentally friendly FK-5-1-12
3. Strong fire extinguish ability and easy installation.
4. Nozzle straightly connected with cylinder
5. with Limit Switch Box, you can connect with fire alarm system.

MODEL NO.	YSS-1000F	YSS-2000F
Extinguish agent	FK-5-1-12	
Agent volume	1,0kg	2,0kg
Extinguish volume	1,215 m ³ (A, B, C)	
Size	335×74 (mm)	
Working Temp.	-20~40 (°C)	
Glass bulb type	Glass bulb (ESFR Type) 68 °C > Quick Response Type	
Certification	KFI	
Material	Cylinder : Al-alloy / Nozzle : Brass with Ni-Cr plated.	



After extinguish a real fire.

: Product is still very clean after extinguish fire.
(It has a great durability)

FIRE NOZZLE



1. Handline Nozzle

- Automatic Pistol Nozzle
- Non-Reaction Pistol Nozzle
- Multi-Purpose Pistol Nozzle
- CAFS Nozzle
- 1" Small Size Pistol Nozzle
- Customizing Pistol Nozzle
- Water Nozzle
- Straight Type Nozzle
- Water Nozzle (Large Flow Rate)
- Water Nozzle (Large Flow Rate)
- Air Foam Nozzle (Straight Type)
- Medium Expansion Foam Nozzle

2. Monitor Nozzle

- Straight Type Nozzle
- Fog & Straight Type Nozzle

3. Special Nozzle

- Cellar Nozzle (Free rotation Nozzle)
- Fire nozzle for Electrified Automobile
- Water Screen Nozzle

4. Nozzle for Maritime

- Pistol Nozzle for Maritime
- Straight Type Nozzle for Maritime
- Multipurpose Nozzle for Maritime
- Applicator Nozzle for Maritime

FIRE NOZZLE

① Handline Nozzle

■ Automatic Nozzle

YOOKSONG's Automatic nozzles by design adjust to fluctuating water flow to maintain effective pressure and a consistent stream in all flow ranges. Nozzles are adjustable from straight stream to fog pattern. Nozzles flush easily without shutting down and provide a constant flow in either for or straight stream.



Sliding valve (6 steps)



Tire pattern bumper with spinning teeth



Pulsing and flush mode



Valve on/off Lock device

Model : YHN-S40PR

Weight : 1.75 kg

Flow rate : 470 L/min (7 Bar)

Material : Al-alloy

Operating Pressure : 7 Bar

Coupling : FE/NH/GOST / STORZ / BS336 / QUICK



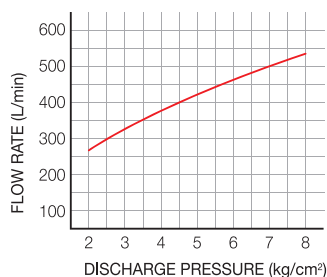
EN15182-2

FIRE NOZZLE

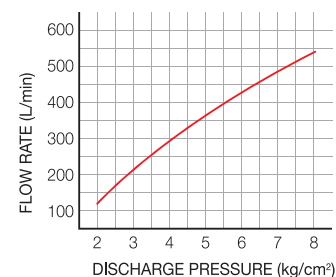
■ Non-Reaction Pistol Nozzle

This special nozzle has variety function. Push out smoke with rotate teeth, automatically regulating pressure mode, and of course, straight to fog water stream mode by analogue nozzle tip. Because of automatic function, it can helps user's arrangement of physical strength when high pressure mode. If you need huge amount of flow-rate or high pressure, you must need this nozzle.

- Test completed — Automatic regulating pressure
- 2018, Korea fire equipment Gold prize



YHN-R40 (40A)



YHN-R65 (65A)



You can change any type of coupling, GOST, QUICK, BS336, NH, STORZ. (MOQ can be required)

SPECIFICATIONS

SIZE	FE40 (1½")	FE65(2½")
SHOOTING RANGE (0.7 MPa)	Over 50 m	
FLOW RATE	500 L/min (0.7 MPa) 330 L/min (0.3 MPa)	780 L/min (0.7 MPa) 515 L/min (0.7 MPa)
LENGTH (mm)	245	294
WEIGHT (kg)	1.9	3.2
MATERIAL	AL-ALLOY	
APPROVAL	KFI	
FUNCTION	반동력 감쇄, 대유량, 배연	



FIRE NOZZLE

■ Multi-Purpose Pistol Nozzle

YHN-MP series has 4 type of different style nozzle. A to D type, all nozzle tip can change by user self-service. Specially A, and D type has water screen mode, so user can protect him/her self and attack in same time.

• 2011 Korea fire equipment prime minister awarded



A-Type

Zet mode + Water screen



B-Type

Zet + Fog mode



C-Type

Zet + Fog + Push out smoke + Flow rate control



D-Type

Zet + Fog + Push out smoke + water screen
(Philippine BFP standard)



You can change any type of coupling,
GOST, QUICK, BS336, NH, STORZ.
(MOQ can be required)

MODEL

ABOUT	A-TYPE	B-TYPE	C-TYPE	D-TYPE
FE40(1½")	YHN-MP40A	YHN-MP40B	YHN-MP40C	YHN-MP40D
FE65(2½")	YHN-MP65A	YHN-MP65B	YHN-MP65C	YHN-MP65D

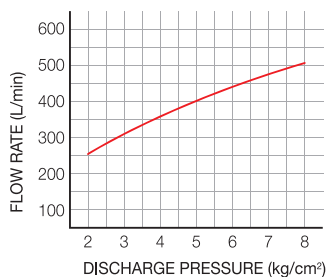
SPECIFICATIONS

SIZE	FE40 (1½")	FE65(2½")
SHOOTING RANGE (0.7 MPa)	Over 45 m	
LENGTH (mm)	A : 275	A : 350
	B : 270	B : 310
	C : 275	C : 310
	D : 325	D : 367
WEIGHT (kg)	A : 1.54	A : 1.91
	B : 1.44	B : 1.89
	C : 1.87	C : 2.16
	D : 2.1	D : 2.51
MATERIAL	AL-ALLOY	
APPROVAL	KFI	

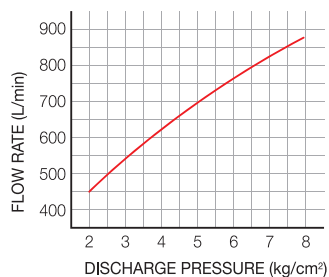


FIRE NOZZLE

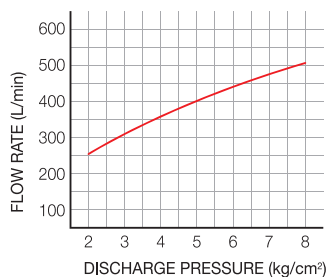
YHN-MP40A



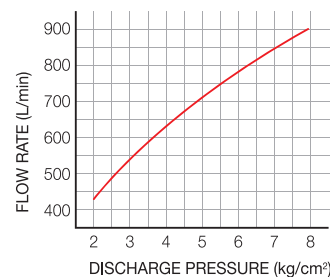
YHN-MP65A



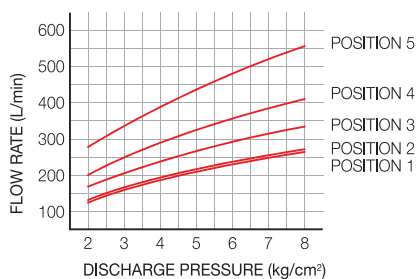
YHN-MP40B



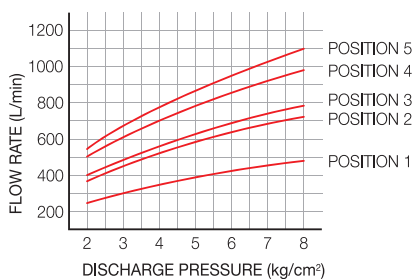
YHN-MP65B



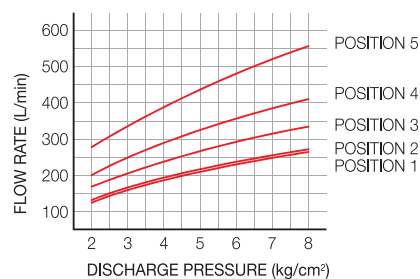
YHN-MP40C



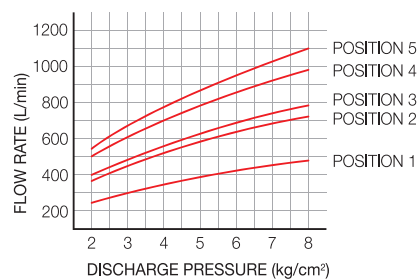
YHN-MP65C



YHN-MP40D



YHN-MP65D



You can protect yourself and attack fire in same time.



Characteristic

1. you can change A,B,C,D type nozzle tip by your self.
2. light weight but solid hardware
3. It helps to implement various tactics.

FIRE NOZZLE

■ CAFS Nozzle

This CAFS nozzle is very simple and easy to use. It has 32 mm nozzle tip and it helps use CAFS very effectively.



YHN-CAFS40



YHN-CAFS65

MODEL	SIZE	FLOW RATE	WEIGHT	APPROVAL
YHN-CAFS40	FE40/QUICK	950 L/min at 0.3 MPa (32 mm)	1.0 kg	KFI
YHN-CAFS65	FE65/QUICK	950 L/min at 0.3 MPa (32 mm)	1.3 kg	KFI

■ 1" Small Size Pistol Nozzle

1" small type of pistol nozzle, you can connect with fire reel hose or 1" normal fire hose.



YHN-MP25B

MODEL	SIZE	FLOW RATE	WEIGHT	APPROVAL
YHN-MP25B	FE25/NH 1"	205 L/min at 0.3 MPa	1.3 kg	KFI

■ Customizing Pistol Nozzle

We can customizing pistol nozzle with any type for our valuable customer. (Color, etc)



FIRE NOZZLE

Water Nozzle

Normal fire nozzles for indoor hydrant.



YHN-W25



YHN-W40A



YHN-W65A



YHN-W40B



YHN-W65B

MODEL	CONN. SIZE	FLOW RATE (0.3 MPa)	DISCHARGE TYPE	TEST PRESSURE	LENGTH (mm)	WEIGHT (KG)	MATERIAL	REMARK	APPROVAL
YHN-W25	FE25	174 L/min	FOG & STRAIGHT	2.0 MPa	105	0.32	AL-ALLOY	REEL-HOSE	KFI
YHN-W40A	FE40	200 L/min			114	0.23	AL-ALLOY	HYDRANT	
YHN-W65A	FE65	430 L/min			137	0.42	AL-ALLOY	HYDRANT	
YHN-W40B	FE40	178 L/min			137	0.63	BRONZE	HYDRANT	
YHN-W65B	FE65	394 L/min			165	1.20	BRONZE	HYDRANT	

Straight Type Nozzle

Straight type nozzle for indoor hydrant



YHN-S25A



YHN-S40B



YHN-S65B



YHN-FT40B



YHN-FT65B

MODEL	CONN. SIZE	FLOW RATE (0.3 MPa)	DISCHARGE TYPE	TEST PRESSURE	LENGTH (m/m)	WEIGHT (KG)	MATERIAL	REMARK	APPROVAL
YHN-S25A	FE25	180 L/min	STRAIGHT	2.0 MPa	150	0.15	AL-ALLOY	HYDRANT	KFI
YHN-S40B	FE40	180 L/min	STRAIGHT	2.0 MPa	254	1.0	BRONZE	HYDRANT	KFI
YHN-S65B	FE65	280 L/min	STRAIGHT	2.0 MPa	305	1	BRONZE	HYDRANT	
YHN-FT40B	FE40	500 L/min	FOG & STRAIGHT	2.0 MPa	138	0.66	BRONZE	FIRE TRUCK	KFI
YHN-FT65B	FE65	800 L/min	FOG & STRAIGHT	2.0 MPa	156	0.96	BRONZE	FIRE TRUCK	

Water Nozzle (Large Flow Rate)

With bigger flow-rate nozzle for fire-fighters.

FIRE NOZZLE

Features

- Designed for Low Pressure
- Corrosion prevention
- Combination fog and straight stream
- Excellent durability and visibility
- Easy to service & repair
- Easy Functionality



YHN-ULW40B



YHN-ULW65B

Accessories / Optional

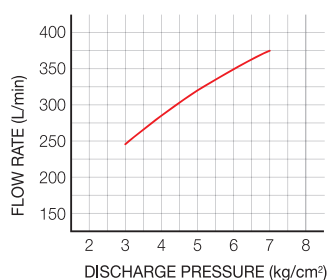
Inlet coupling by NHT, Machino, BS336, NAKAJIMA, GOST, STORZ

SPECIFICATIONS

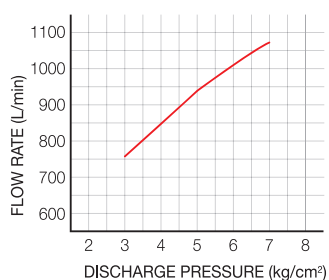
Type: STRAIGHT & FOG STREAM

MODEL	YHN-ULW40B	YHN-ULW65B
SIZE	1-1/2"	2-1/2"
INLET CONNECTION	NH FEMALE THREAD	
WORKING PRESSURE	7 barg	
TEST PRESSURE	20 barg	
MATERIAL	BRONZE	
SHOOTING RANGE	28m	37m
FLOW RATE	375 LPM / 7 barg	1070 LPM / 7 barg
LENTH (mm)	APPROX. 95.5 (mm) (Closed)	APPROX. 130 (mm) (Closed)
WEIGHT (Kg)	APPROX. 0.96 Kg	APPROX. 1.79 Kg
APPROVAL	UL LISTED	

Performance Curve

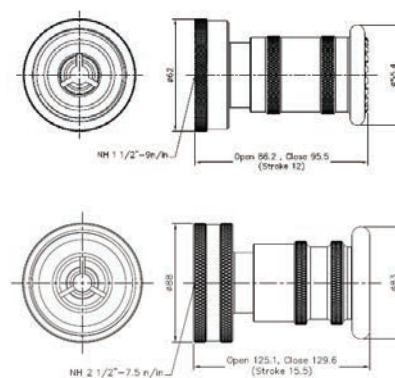


YHN-ULW40B



YHN-ULW65B

Reference Drawing



FIRE NOZZLE

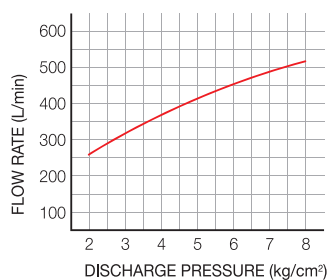
■ Water Nozzle (Large Flow Rate)

With Large flow rate, easy to use, light weight. It is the best-seller for fire-fighters.

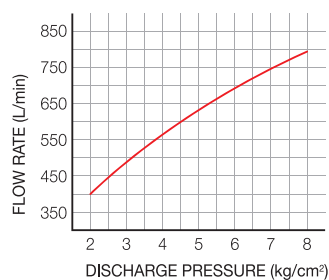
• Coupling types, (FE / NH / GOST / QUICK / MACHINO / BS336)



YHN-FT40A



YHN-FT65A



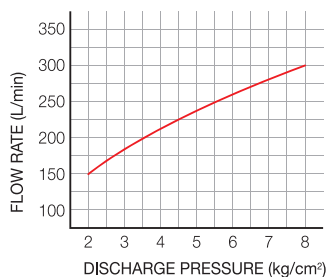
MODEL	CONN. SIZE	FLOW RATE	DISCHARGE TYPE	TEST PRESSURE	LENGTH (m/m)	WEIGHT (KG)	MATERIAL	APPROVAL
YHN-FT40A	FE40	300 L/min	FOG & STRAIGHT	2.0 MPa	167	0.62	AL-ALLOY	KFI
YHN-FT65A	FE65	543 L/min	FOG & STRAIGHT	2.0 MPa	193.5	1.13	AL-ALLOY	

FIRE NOZZLE

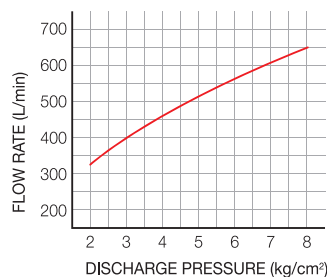
■ Air Foam Nozzle (Straight Type)

Can change connector by Quick / NH / GOST / Storz etc.

- Foam concentrate 3% standard
- Non-pick up hose type can supply



YHN-F40 (Non Pick-up Type)
YHN-F40P (Pick-up Type)



YHN-F65P1 (Pick-up Type) / 901 (mm)
YHN-F65P2 (Pick-up Type) / 700 (mm)



*Ball Valve Type
(Option: 40A / 65A possibility)



* Quick type (Example)



* Connect pick-up hose

SPECIFICATIONS

SIZE	FE40 (1½")	FE65(2½")
SHOOTING RANGE (0.7 MPa)	Over 30 m	Over 38 m
FLOW RATE (0.3 MPa)	Over 180 L/min	Over 400 L/min
LENGTH (mm)	600	700 / 901
WEIGHT (kg)	1.2	2.95 / 3.48
MATERIAL	AL-ALLOY	
APPROVAL	KFI	

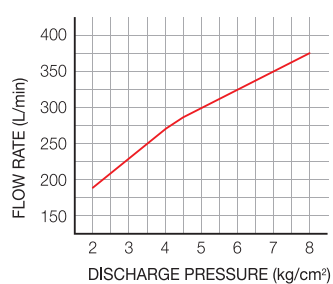
FIRE NOZZLE

■ Medium Expansion Foam Nozzle

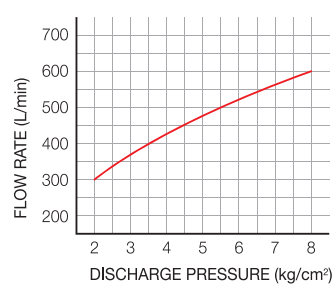
More than 50 times foaming magnification you can experience. Very light weight compare to competitors.
(Quick / BS336 / GOST / STORZ etc.)



YHN-MF40 (40A)



YHN-MF65 (65A)



SPECIFICATIONS

SIZE	FE40 (1½")	FE65(2½")
FLOW RATE (0.7 MPa)	Over 250 L/min	Over 400 L/min
LENGTH (mm)	502	687
WEIGHT (kg)	3.2 kg	4.6 kg
MATERIAL	Stainless Steel + Al-alloy	
FOAM SCALE	More than 50 times	

FIRE NOZZLE

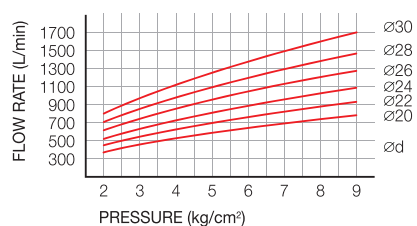
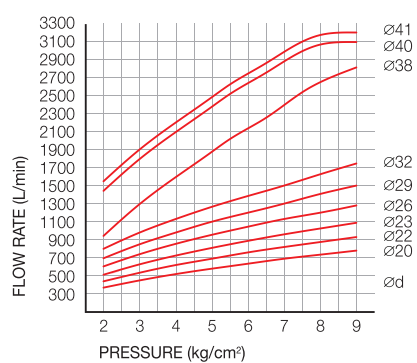
② Monitor Nozzle

■ Straight Type Nozzle

Underground flush type hydrant (4")



YMN-D65 / YMN-S65A



YNT-A(20~30)

* Al-alloy nozzle tips.



YNT-B(20~41)

*Bronze type nozzle tips.

SPECIFICATIONS

MODEL	SIZE	MATERIAL	LENGTH	APPROVAL
YMN-D65	FE65(2½")	BRONZE	610 (mm)	KFI
YMN-S65A	FE65(2½")	AL-ALLOY	460 (mm)	KFI

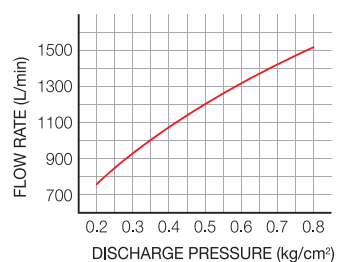
FIRE NOZZLE

■ Fog & Straight Type Nozzle

Fire monitor nozzle Fog & Straight convertible type. (Bronze / Basic type)



YMN-J65



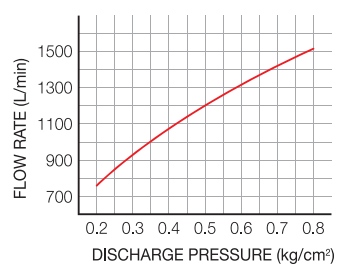
SPECIFICATIONS

CONN. SIZE	FLOW RATE (0.7 MPa)	DISCHARGE TYPE	USEABLE LIQUID	TEST PRESSURE	SHOOTING RANGE	MATERIAL	APPROVAL
FE65	1900 L/min	FOG & STRAIGHT	WATER	2.0 MPa	Approx. 60 m (0.7 MPa)	BRONZE	KFI



YMN-J65F

* Foam nozzle type / Pick-up hose type



SPECIFICATIONS

CONN. SIZE	FLOW RATE (0.7 MPa)	DISCHARGE TYPE	USEABLE LIQUID	TEST PRESSURE	SHOOTING RANGE	MATERIAL	APPROVAL
FE65	1900 L/min	FOG & STRAIGHT	WATER & FOAM	2.0 MPa	Approx. 60 m (0.7 MPa)	BRONZE Ni-Cr Plated	KFI

FIRE NOZZLE

③ Special Nozzle

■ YSN-CL & YSN-CLP | Cellar Nozzle (Free Rotation Nozzle)

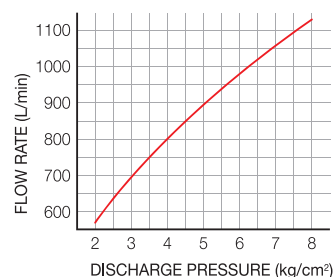
This special nozzle you can use in any multi situation, It has special ability when Flash over occurs.



Cellar Nozzle Body



Protection net



SPECIFICATIONS

MODEL	SIZE	FLOW RATE(0.7 MPa)	WEIGHT(kg)	MATERIAL
YSN-CL	FE65(2½")	300 GPM	2.3 kg (Nozzle) 3.2 kg (Protection net)	Bronze (Body) / SS400 (Protection net)

OPTION



Pistol Ball valve
(Non-Pistol Available)



Branch Pipe (Al-alloy)
Length : 200~1000 (mm)



Protection net

FIRE NOZZLE

■ Fire nozzle for Electrified Automobile

1. Bottom of a vehicle cooling in case of electrified vehicles fire
2. Fitted with four(4) water mist nozzles (30 LPM at 3,5 Barg / Each nozzle)
3. Water mist nozzle which spraying angle above 90 degree has distribution with full cone.
4. The purchase can use it by connecting a fire hose (available conn. size in either 32A or 40A)



Weight : 8.0 kg

Flow rate : 120 LPM at 3,5 Barg

180 LPM at 7,0 Barg

Material:

- Pipe : Stainless Steel 304 with powder coating
- Coupling : Al-alloy
- Nozzle : Brass
- Wheel : Brass with Ni-Cr plated



Fitted with mist cooling nozzles



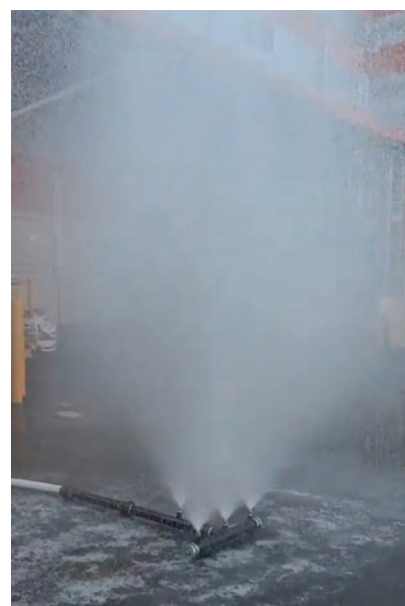
Portable type



Easily put in to under the automobile



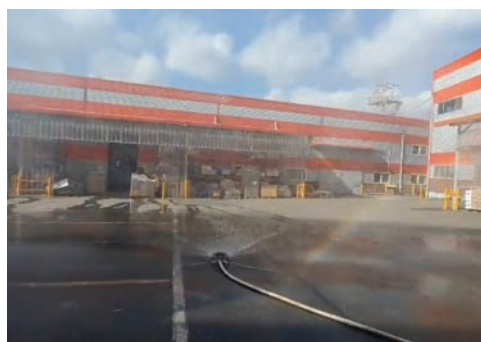
Bag for nozzle



FIRE NOZZLE

■ Water Screen Nozzle (K-Style)

Very special water screen nozzle made by STS304. it has very light weight. with very small size, you can carry anytime, anywhere for use.



SPECIFICATIONS

MODEL	YHN-WS40K	YHN-WS65K
Flow rate (7 bar)	500 LPM	1,200 LPM
Weight (kg)	2.4 kg	2.9 kg
Material	Body : Stainless Steel / Coupling : Al-alloy	
Coupling style	Anti-twist Swivel type	
Water Screen type	Length : 18 m / Height : 8 m / Degree 180°(at 7 bar)	

FIRE NOZZLE

■ Water screen nozzle

This nozzle makes water screen that blocks fire.



SPECIFICATIONS

MODEL	SIZE	FLOW RATE (AT 0.6 MPa)	MATERIAL
YCL-WS40	40A (FE40)	500 L/min	AL-ALLOY
YCL-WS65	65A (FE65)	1000 L/min	



FIRE NOZZLE

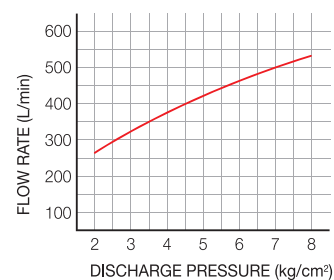
4 Nozzle for Maritime

■ Pistol Nozzle for Maritime

Fog & Straight convertible, Swivel coupling,
Water & Foam convertible.



YHN-SP40



SPECIFICATIONS

MODEL	SIZE	FLOW RATE (At 0.7 MPa)	MATERIAL	APPROVAL
YHN-SP40	NPSH (1-1/2") / NH(1-1/2") / QUICK(1-1/2") / GOST(2") / STORZ (2")	500 LPM	BRONZE	FILK / NFPA

■ Straight type nozzle for maritime



YHN-SD40



YHN-SD65

SPECIFICATIONS

MODEL	SIZE	FLOW RATE	MATERIAL	APPROVAL
YHN-SD40	NPSH1½"	260 L/min at 0.3 MPa 355 L/min at 0.7 MPa	BRONZE	FILK
YHN-SD65	NH2½"	680 L/min at 0.3 MPa 940 L/min at 0.7 MPa		

FIRE NOZZLE

■ Multipurpose Nozzle for Maritime

Multi-purpose nozzle for maritime. Usually it connects long-pipe applicator.



YHN-SM40 (40A)



YHN-SM65 (65A)

SPECIFICATIONS

MODEL	SIZE	FLOW RATE (0.7 MPa)	LENGTH	WEIGHT	MATERIAL
YHN-SM40 (40A)	NPSH 1½"	300 L/min	155 mm	3 kg	BRONZE
YHN-SM65 (65A)	NH 2½"	420 L/min	254 mm	5,5 kg	

■ Applicator Nozzle for Maritime

Applicators help extinguish fires in hazardous locations. (Specially Engine room)



SPECIFICATIONS

MODEL	SIZE	ANGLE	FLOWRATE (0.7 MPa)	LENGTH	WEIGHT	MATERIAL
YHN-SA40	1-1/2"	45°/ 90°	510 LPM	3,780 (mm)	7.7 (kg)	BRONZE
YHN-SA65	2-1/2"					

* Length can be customizing

FIRE HOSE



Anti-Twist Fire Hose

Anti-Twist Fire Hose (For Maritime)

Fire Hose

Piston Sliding Hydrant Valve

Water Suction Hose

Duraline hose

Multi-Purpose Fire Equipment Bag

FIRE HOSE

■ Anti-Twist Fire Hose

Anti-twist swivel fire hose is totally different compare to original fire hose. When anti-twist fire hose is connected with water valve, then hose automatically spins around itself because of water pressure and this prevents twist phenomenon.

• Commendation by Prime minister



Single jacket
(Working pressure (0.7 ~ 1.3 MPa))



Double Jacket
(Working pressure 2.0 MPa)



Can change color
*Red/Orange/Yellow/Green/Blue/Purple

SPECIFICATIONS

TYPE	MODEL	SIZE	PRESSURE (bar)	MATERIAL	HOSE COUPLING	APPROVAL
SINGLE JACKET HOSE	YFH-S40AT	40A	Custom order (7 bar / 9 bar/ 10 bar / 13 bar / 16 bar)	JACKET : POLYESTER FILAMENT YARN POLYESTER NYLON YARN LINING : PVC / EPDM / PU COUPLING : AL-ALLOY / BRONZE	FE / NH / NPSH	UL version - 17 bar (250 psi)
	YFH-S50AT	50A				
	YFH-S65AT	65A				
	YFH-S75AT	75A				

TYPE	MODEL	SIZE	PRESSURE (bar)	MATERIAL	HOSE COUPLING	APPROVAL
DOUBLE JACKET HOSE	YFH-D40AT	40A	20 bar	JACKET : POLYESTER FILAMENT YARN POLYESTER NYLON YARN LINING : PVC / EPDM / PU COUPLING : AL-ALLOY / BRONZE	FE / NH / NPSH	KFI
	YFH-D50AT	50A				
	YFH-D65AT	65A				
	YFH-D75AT	75A				

Urethane ring color can change



SWIVEL EXAMPLE



FIRE HOSE

■ Anti-Twist Fire Hose (For Maritime)

This product functions are basically same as other anti-twist fire hose, but since a fire hose is for marine use a material is bit of different compare to ground ones. We have attached high corrosion resistance rubber (EPDM) and bronze material for connection part to prevent corrosiveness.



SPECIFICATIONS

TYPE	MODEL	SIZE	PRESSURE (MPa)			LENGTH	MATERIAL	APPROVAL
			WORK	TEST	BURST			
Double jacket fire hose	YFH-SD40AT	NH 1-1/2"	3.0	6.0	8.0	7.5 / 15 (m)	JACKET : POLYESTER NYLON YARN POLYESTER FLAMNET YARN LINING : RUBBER(EPDM) COUPLING : AL-ALLOY OR BRONZE(MARINE)	ROK Navy FILK
	YFH-SD65AT	NH 2-1/2"	3.0	6.0	8.0			



YFH-SD40AT



YFH-SD65AT

SWIVEL EXAMPLE



Patented by Korea and World-wide
(Technical and Design)



FIRE HOSE

■ Fire Hose

Our regular fire hose jackets are made with two different structure. One-way of jacket structure is plain weave and the other is twill weave. Moreover, inside of fire hose is made with polyurethane which gives our fire hose to have excellent wear resistance, chemical resistance, ozone resistance, and weather-proof.

- Color change (Red, Orange, Yellow, Blue, Green, Purple)
- Inner Jacket change
- Length change



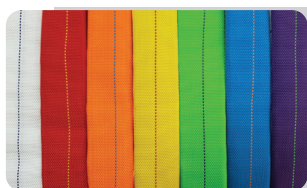
Single jacket
YFH-S40 / YFH-S65



Double jacket
YFH-D40 / YFH-S65

SPECIFICATIONS

Working Pressure	YFH-S40	7 / 9 / 10 / 13/ 16 / 17 (Bar)
	YFH-S65	
	YFH-D40	20 / 30 / 40 (bar)
	YFH-D65	
Material	Outer Jacket : Polyester Filament / Polyester Nylon / Rubber	
	Inner Jacket : PU / PVC / Rubber / EPDM	
	Coupling : Al-alloy / Bronze	
Coupling style	FE / QUICK / BS 336 / GOST / NH / NPSH	
	KFI UL (17 Bar)	



COLOR OF FIRE HOSE

*RED / ORANGE / YELLOW / GREEN / BLUE / PURPLE

FIRE HOSE

■ Piston Sliding Hydrant Valve

The world's first Piston Sliding Hydrant Valve developed by YOKSONG is locked and opened when pushed and unfolded by the user therefore can be operated by one(1) person when installed in an indoor fire hydrant. By using double O-ring used it can prevent valve leakage water moreover the user can detect water pressure in use by a pressure gauge (Optional).



Valve can rotate any direction.

Features

The main selling points are that it is able to operate by one(1) person. It's mainly because even the user open the valve, water doesn't fill the hose promptly and also flow rate can be adjusted by piston sliding hydrant valve.

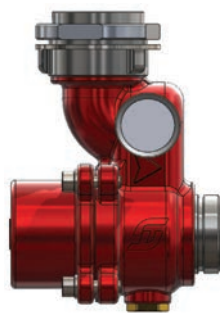
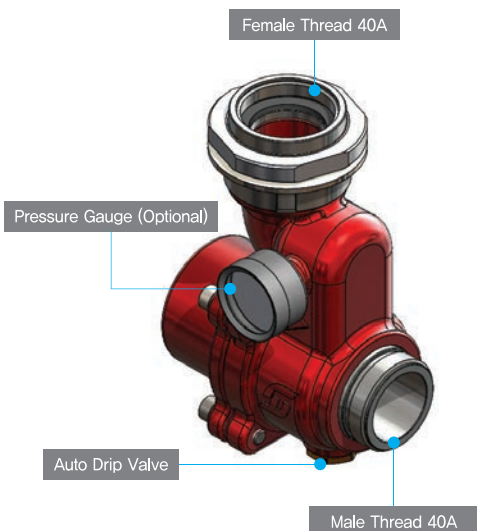
SPECIFICATIONS

MODEL	YHV-P40
Working Pressure	1~10 bar
Material	Al-alloy
Valve style	Sliding Piston type
Accessories	Pressure gauge, Auto drain valve

구분	① Fire hose	② Hose reel	③ Piston Sliding Hydrant Valve
How to load fire hose	being folded or hanging on the fire hose rack	hose reel type	being folded or hanging on the fire hose rack
Instruction	1) walking towards the fire, a fire hose is fully unravelled carefully not to kink 2) open the angle valve 3) open the nozzle to discharge 4) after extinguishing the fire, put back the fire hose on the fire hose rack	1) open the angle valve 2) pull the nozzle & the fire hose out of the cabinet and walk towards the fire 3) open the nozzle to discharge 4) after extinguishing the fire, the hose can be rewind by handle	1) open the angle valve 2) pull the nozzle & the fire hose out of the cabinet and walk towards the fire 3) strongly pull the nozzle then water will fill the hose then open the nozzle to discharge 4) after extinguishing the fire, put back the fire hose on the fire hose rack
User	two(2) people	one(1) person	one(1) person
Strength	1) large flow rate 2) reasonable price	1) easy to use 2) discharging water well 3) it can extinguish a fire at the initial stages promptly unravelling a fire hose	1) it can be operate by one(1) person 2) it can be installed in the hose cabinet existed
Weakness	1) it must be operated by two(2) people at once 2) there might be a kink in a hose	1) highly priced 2) it is unavailable to install the hose cabinet existed 3) low flow rate 4) it is large in volume	1) the user should be careful to extend a fire hose to ensure there might be a kink in a hose

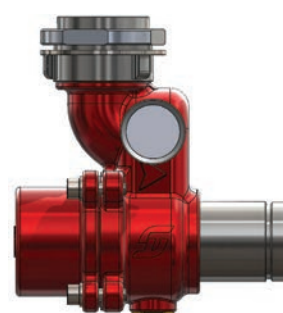
FIRE HOSE

Product Appearance



Before Using

- 1) Shutting off water
- 2) Automatically drain the water left



After Using

- 1) Discharging off water
- 2) Auto drip valve works

Instruction



Open the door of hose cabinet and fully open the valve turning the handle anticlockwise



Ensure that the pressure gauge is pressurized by water



Take the nozzle & fire hose out of the cabinet



Slowly pull the nozzle & the fire hose out of the cabinet and walk towards the fire



Next, after the fire hose is fully unravelled strongly pull the nozzle then water will fill the hose



After that, when the water reaches the nozzle, aim at the fire and open the nozzle to discharge the water



Lastly, after extinguishing the fire, close the valve and open the nozzle to release the water



The piston valve should be put back

FIRE HOSE

■ Water Suction Hose

Water suction hose (Rubber / EPDM type)

Oil resistance type



New type

Old type



YSH-D65A
(2-1/2")

YSH-D75A
(3")

YSH-D100A
(4")

YSH-D150A
(6")

Coupling Size

SPECIFICATIONS

MODEL	SIZE	LENGTH	WEIGHT (2.5 m)	MATERIAL(Hose)	MATERIAL(Coupling)
YSH-D65A	65A (2-1/2")	2.5 (m) OR 4 (m) (Maximum 8 m)	6 kg	Oil resistance synthetic rubber + Strong steel wire	Al-alloy (with Hard anodizing)
YSH-D75A	75A (3")		8.8 kg		
YSH-D100A	100A (4")		16.3 kg		
YSH-D150A	150A (6")		36.5 kg		



FIRE HOSE

■ Duraline hose

An important feature of Duraline is its ability to be deployed in the Cleveland Coil configuration, which enables firefighters to move the hose from its stowed position in a standard vehicle hose locker and to carry it quickly and easily into high rise buildings, where it can be charged rapidly with water, ready for immediate fire fighting. The hose rapidly assumes a smoothly coiled shape with no kinking once charged and therefore it is able to provide a full water flow for fire fighting.



RUBBER / PVC / PU

Application : Fire-fighting / Navy / Construction

Standard : EN 14540 / MED / CNBOP / ULC / BS639 TYPE 3

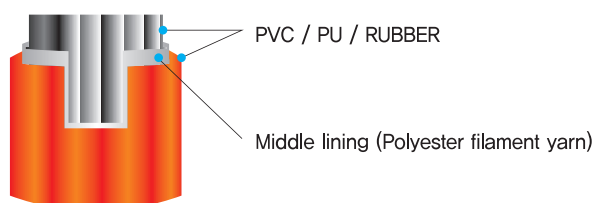
Length : 15 m / 20 m / 30 m / 40 m

Color : Red / Yellow / Blue / Black / Brown

SPECIFICATIONS

Inner Diameter		Working Pressure	Bursting Pressure
inch	mm	Mpa	Mpa
1 1/2"	38	0.8-3.0	2.4-9.0
1 3/4"	45	0.8-3.0	2.4-9.0
2"	50	0.8-3.0	2.4-9.0
2 1/2"	65	0.8-3.0	2.4-9.0
2 3/4"	70	0.8-3.0	2.4-9.0
3"	75	0.8-3.0	2.4-9.0
4"	102	0.8-1.6	2.4-4.8
5"	127	0.8-1.3	2.4-3.9
6"	152	0.8-1.3	2.4-3.9

Structure



FIRE HOSE

Special Coupling

STORZ

규격	재질	
1"	Al-alloy / bronze	
1.5"		
1.75"		
2"		
2.5"		
3"		
4"		

GOST

규격	재질	
2"	Al-alloy / bronze	
2.5"		
3"		

BS336

규격	재질	
1.5"×2.5"	Al-alloy / bronze	
2"×2.5"		
2.5"×2.5"		

ITALIAN

규격	재질	
2"	Al-alloy / bronze	
2.5"		
3"		

NH (USA)

규격	재질	
1.5"	Al-alloy / bronze	
2"		
2.5"		

CANADIAN

규격	재질	
1"	Al-alloy / bronze	
1.5"		

MULTI-PURPOSE FIRE EQUIPMENT BAG

■ Multi-Purpose Fire Equipment Bag

This special bag is attached to a valve or Y-type connector connected to a fire engine, etc., so that it does not rub against the floor such as asphalt when the fire hose is deployed.

In addition, when the fire hose is deployed, it does not become twisted when moving, so it can be extinguished quickly and easily.

- Neat arrangement of fire hoses and nozzles
- Organized storage inside the fire engine
- Fire hose X 2 + Pistol nozzle + etc.
- Total weight : 11,3 kg
- It is advantageous for extinguishing fires such as narrow alleyways, markets, and stairs.

Multi-purpose storage space



YS-FEB-40 (40A)

Weight : 11,3 kg (Fire hose X 2 + Pistol nozzle
+ Hose wrench)



YS-FEB-65 (65A)

Weight : 21,5 kg (Fire hose X 2 + Pistol nozzle
+ Hose wrench)

- Easy clean / Flame retardant performance
- Bag can put 2 fire hoses
- Easy to unfold fire hoses

Size

Length (54 cm) X Height (28 cm)
X Width (17 cm)

Main material

Body : Tarpaulin (Blue / Black)



FIRE HOSE-REEL HYDRANT



Hose Reel Drum Set

Components of Hose Reel

Special Type Hose Reel

FIRE HOSE-REEL HYDRANT

■ Hose Reel Drum Set (Friction loss : 1,8 bar (30 m))

Korean style fire hose-reel, reel hose it has very light weight and solid durability.

Used polyester filament yarn, and PU that makes easier to extinguish fire for anybody.

Certification : KFI / EN-694 Standard



YHR-L25 (Left side)

YHR-U25 (Underside)

SPECIFICATIONS

HOSE LENGTH (m)	DRUM SIZE (mm)	TRIANGLE BRACKET	UNDERSIDE BRACKET	MATERIAL	OPTIONAL
15 ~ 50	420	135 mm	FOLDED 183 mm	SS 400 POWDER COATED BY YELLOW, RED, AND IVORY COLOR PLATED	Pressure gauge
	450	175 mm			
	500	200 mm	SPREADED 535 mm		
	550	225 mm			
	600	250 mm			

COMPARATIVE TABLE

Product type		Hose-reel hydrant	Indoor fire hydrant
Water supply(per unit)		2.6m³ (maximum 5 units)	
Working pressure		0.17 ~ 0.7 MPa	
Water flow rate		Over 130 ℓ /min	
Method of storage		Always rolled in drum.	Use fire hose-rack
Diameter of Hose		25 mm	40 mm
Horizontal distance		Must be Below 25 m	
How to use		1. Open the valve 2. bring the nozzle to fire spot 3. open the nozzle and extinguish fire	1. Spread fire hose to fire spot 2. come back to the valve and open it. 3. Go back to the fire spot and open the nozzle 4. Extinguish fire
Comparison of Pros and Cons	Pros	1. Anybody can use easily (Specially elderly, woman, Children) 2. No twist of fire hose 3. 1 person can use.	1. None
	Cons	None	1. Usually you need 2 person for use 2. Twist of fire hose can occur 3. Very strong water pressure comes

FIRE HOSE-REEL HYDRANT

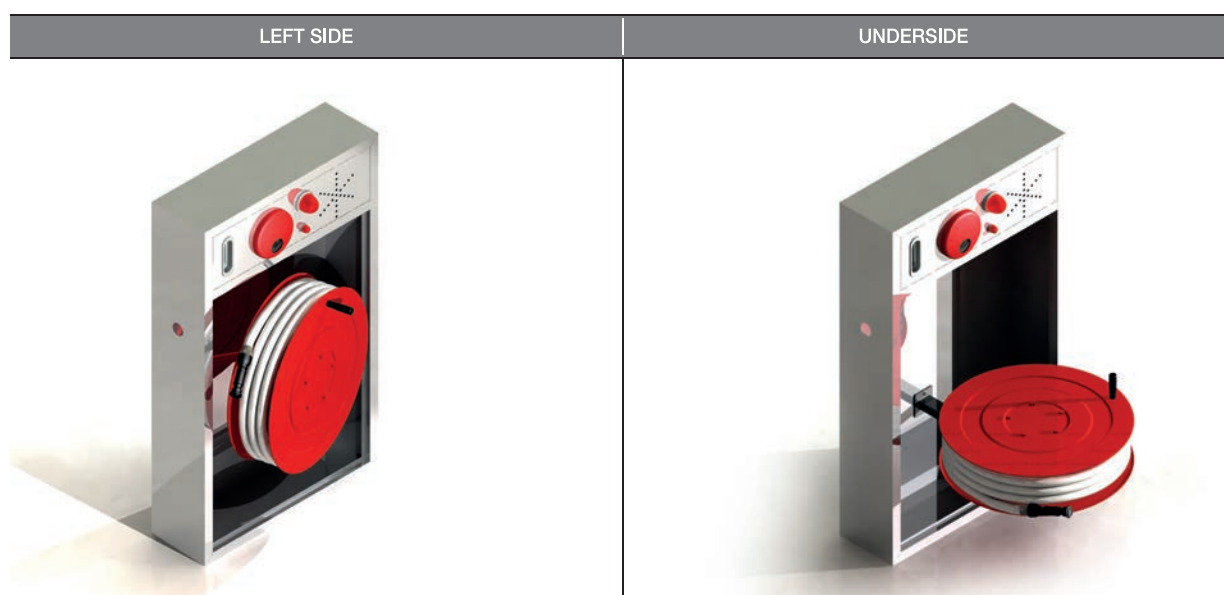
■ Components of Hose Reel



SPECIFICATIONS

MODEL	SIZE	MATERIAL	WEIGHT(kg)	TEST PRESSURE		WORKING PRESSURE	HEIGHT (mm)	
				SEAT	BODY		CLOSED	OPENED
YIH-B25	PT 1" x FE25	BRONZE	0.67	1.5 MPa	2.0 MPa	1.0 MPa	122	144
YIH-S25	PT 1" x FE25	STAINLESS STEEL	0.69				127	149
YHN-W25	FE25	AL-ALLOY	0.29				114	105
YHN-AT25			0.41				139	130
YFH-R(25/32)	FE25 / FE32	POLYESTER & TPN	-	1.5 MPa		0.7 MPa	Length : 15~100 (m)	

■ 3D Modeling Example



FIRE HOSE-REEL HYDRANT

■ Installation Example Photo



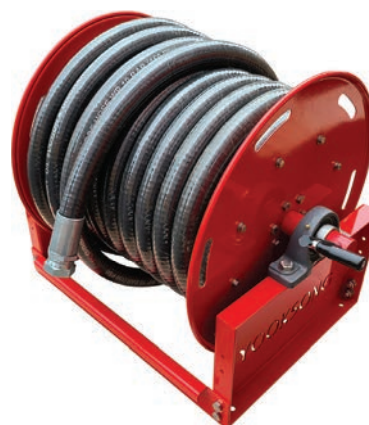
FIRE HOSE-REEL HYDRANT

■ Special Type Hose Reel

Special type of fire hose—reel that use in the plant industry or fire truck



YFH-R40T



YFH-R65T

SPECIFICATIONS

Material	SS400 / STS304 / STS316
Color	Red (base model)
Size	1-1/2" OR 2-1/2"
Fire hose material	NR / BR / EPDM / SBR / EN TYPE 3
working pressure	10 ~ 20 Bar
Coupling type	NH, FE, QUICK, STORZ etc.
Length	30 m(base model) you can customizing your fire hose length

OUTDOOR FIRE HYDRANT



4" Outdoor Hydrant

4" Underground Hydrant

6" Outdoor Hydrant (Kennedy)

6" Outdoor Hydrant (Darling)

Wet Type Outdoor Hydrant

Protection bar for Hydrant

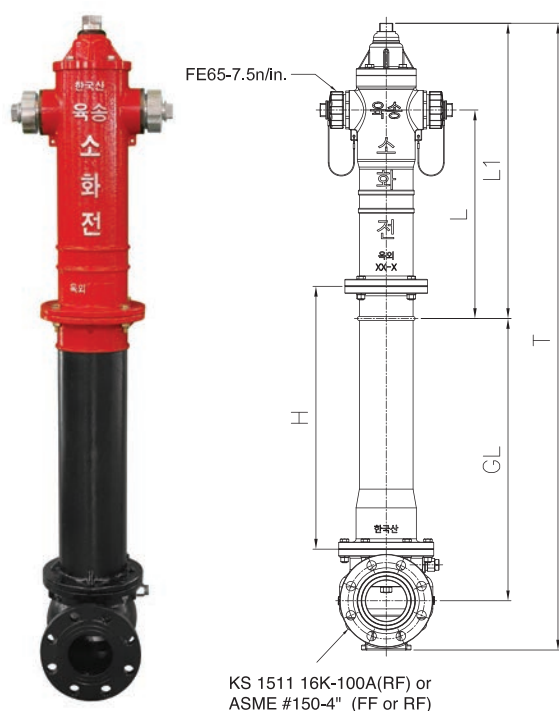
Post Indicator Valve

Post Indicator Valve

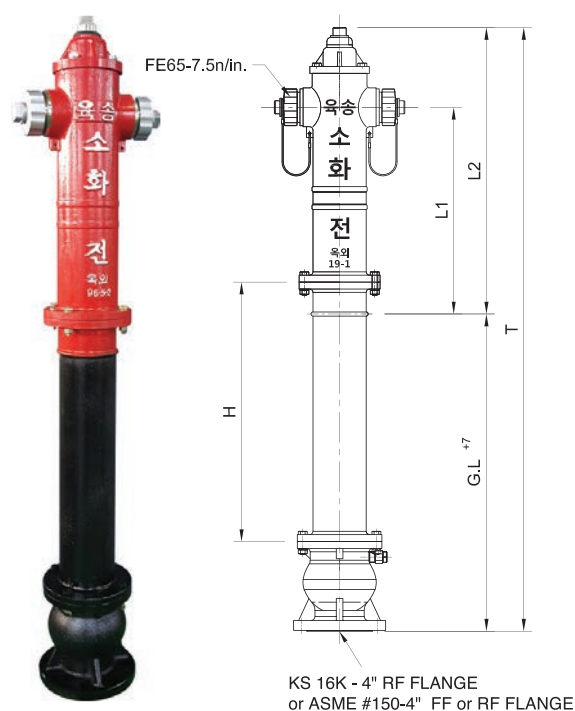
OUTDOOR FIRE HYDRANT

■ 4" Outdoor Hydrant

Dry barrel type basic outdoor hydrant

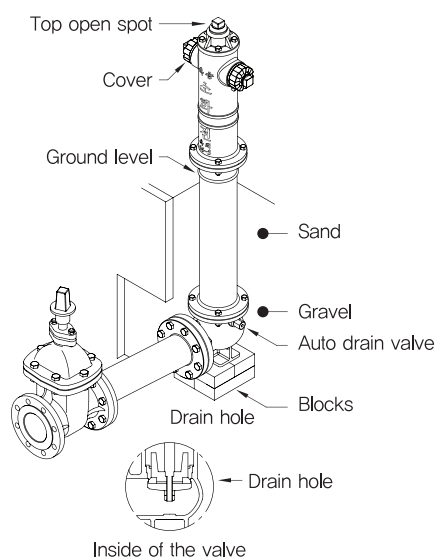


YOH-B100



YOH-I100

3D MODELING INSTALLATION SAMPLE



YOH-B100 / YOH-B100L / YOH-I100 / YOH-I100L (2-WAY)

TYPE : 2-WAY DRY BARREL, ANTI FREEZING, SELF DRAINABLE

INLET CONNECTION : 4" KS B 1511 16K RF FLANGE
4" ANSI #150 FF OR RF FLANGE

HOSE CONNECTION : TWO(2) X FE65 MALE THREAD w/CAP & CHAIN

TEST PRESSURE : 2.0 MPa

PAINT : A.G. - EPOXY PAINT IN RED OR YELLOW
U.G. - EPOXY PAINT IN BLACK

BODY MATERIAL : DUCTILE CAST IRON

CAP MATERIAL : AL-ALLOY OR BRONZE

APPROVAL : KFI APPROVED

MODEL	DIMENSION (mm)				
	G.L	H	L1	L2	T
YOH-B100	660	623	505	700	1362
YOH-B100L	1283	1246	505	700	1983
YOH-I100	775	634	505	700	1475
YOH-I100L	1315	1174	505	700	2015

OUTDOOR FIRE HYDRANT

■ 4" Underground Hydrant

Underground hydrant, it can use with stand-pipe and long wrench

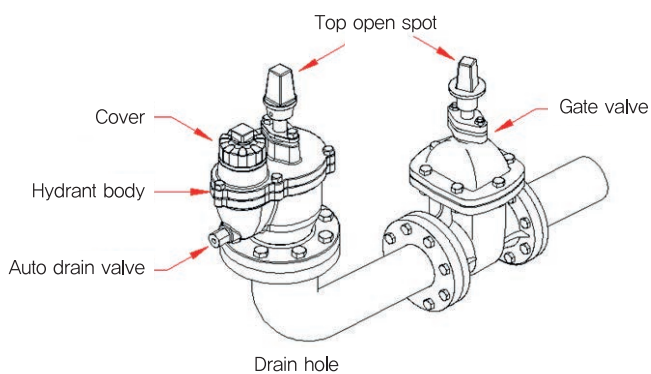


YOH-U100



**YOH-U150A
6" / 150A**

3D MODELING INSTALLATION SAMPLE



YOH-U100 (1-WAY)

TYPE : 1-WAY DRY BARREL, ANTI FREEZING, SELF DRAINABLE

INLET CONNECTION : 4" KS B 1511 16K RF FLANGE

HOSE CONNECTION : ONE(1) X FE65 MALE THREAD w/CAP & CHAIN

TEST PRESSURE : 2.0 MPa

PAINT : EPOXY PAINT BY GRAY

BODY MATERIAL : CAST IRON OR DUCTILE

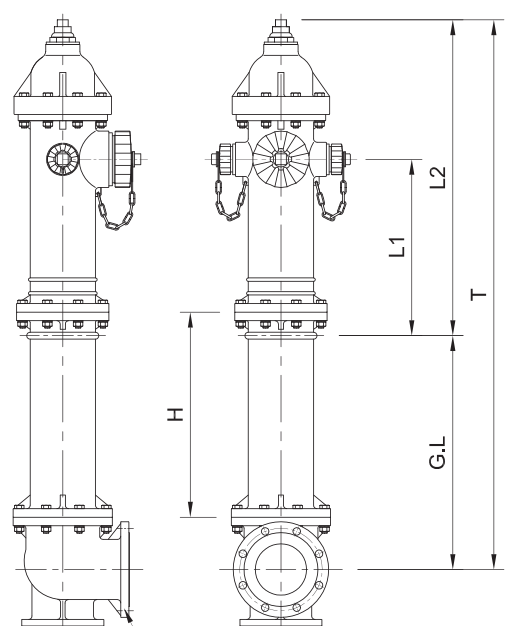
CAP MATERIAL : AL-ALLOY

APPROVAL : KFI APPROVED

OUTDOOR FIRE HYDRANT

■ 6" Outdoor Hydrant (KENNEDY)

6" KENNEDY Type outdoor hydrant



ASME #150 - 6" FF or RF FLANGE

YOH-K150C (3-WAY) YOH-K150D (4-WAY)

TYPE : 3 & 4-WAY DRY BARREL, ANTI FREEZING, SELF DRAINABLE

INLET CONNECTION : 6" ANSI #150 FLANGE

HOSE CONNECTION : TWO(2) X FE65 MALE THREAD w/CAP & CHAIN

PUMP CONNECTION : ONE(1) X FE115 MALE THREAD w/CAP & CHAIN

MONITOR CONNECTION : ONE(1) X 4" ANSI #300 FF FLANGE *Only for 4-WAY

TEST PRESSURE : 2.0 MPa

PAINT : A.G. - EPOXY PAINT IN RED OR YELLOW

U.G. - EPOXY PAINT IN BLACK

BODY MATERIAL : CAST IRON OR DUCTILE

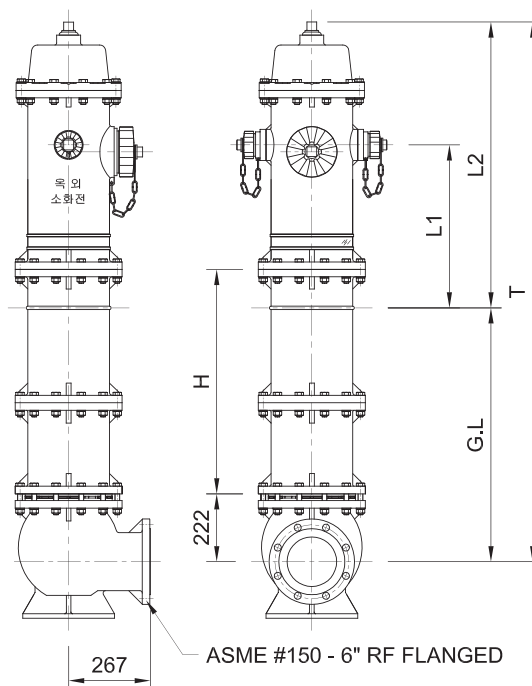
CAP MATERIAL : AL-ALLOY OR BRONZE

BURIED DEPTH (mm)	DIMENSION (mm)			
G.L	H	L1	L2	T
684	600	516	924	1608
954	870	516	924	1878
1104	1020	516	924	2028
1254	1170	516	924	2178

OUTDOOR FIRE HYDRANT

■ 6" Outdoor Hydrant (DARILING)

6" DARLING Type outdoor hydrant (3-WAY, 4-WAY)



YOH-D150C (3-WAY) YOH-D150D (4-WAY)

TYPE : 3 & 4-WAY DRY BARREL, ANTI FREEZING, SELF DRAINABLE

YSHD-150A : FLANGE TYPE ENDED FOR HOSE CONNECTION VALVE

INLET CONNECTION : 6" ANSI #150 FLANGE

HOSE CONNECTION : TWO(2) X FE65 MALE THREAD w/CAP & CHAIN

PUMP CONNECTION : ONE(1) X FE115 MALE THREAD w/CAP & CHAIN

MONITOR CONNECTION : ONE(1) X 4" ANSI #300 FF FLANGE *Only for 4-WAY

TEST PRESSURE : 2.0 MPa

PAINT : A.G. - EPOXY PAINT IN RED OR YELLOW

U.G. - EPOXY PAINT IN BLACK

BODY MATERIAL : CAST IRON OR DUCTILE

CAP MATERIAL : AL-ALLOY OR BRONZE

BURIED DEPTH (mm)	DIMENSION (mm)			
G.L	H	L1	L2	T
830	734	533	935	1765
950	854	533	935	1885
1100	1004	533	935	2035
1250	1154	533	935	2185

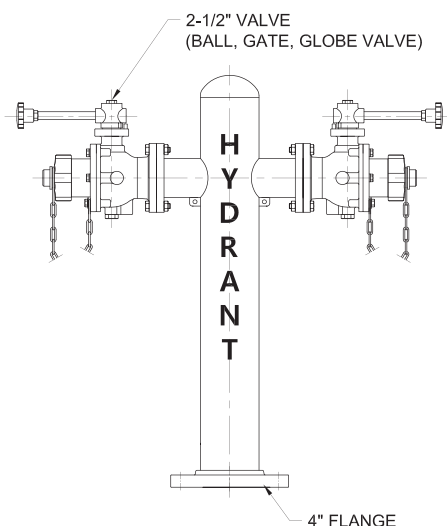
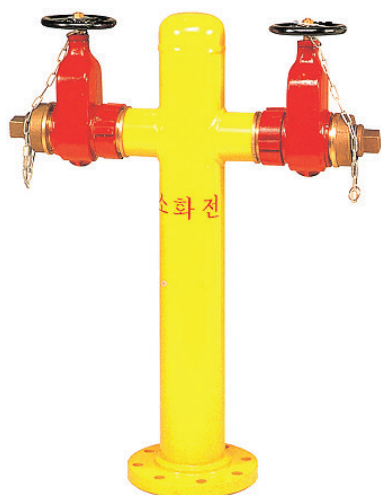
OUTDOOR FIRE HYDRANT

■ Wet Type Outdoor Hydrant

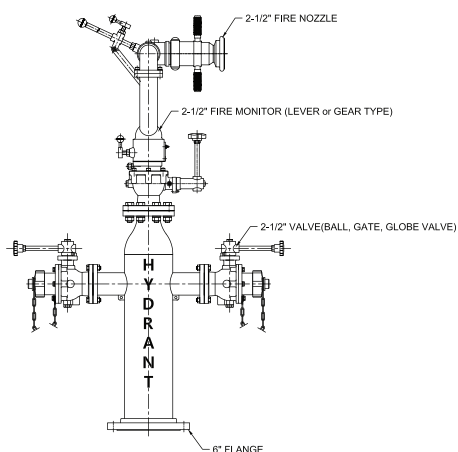
For areas without frozen

Wet type outdoor hydrant. Usually install at the hot weather country.

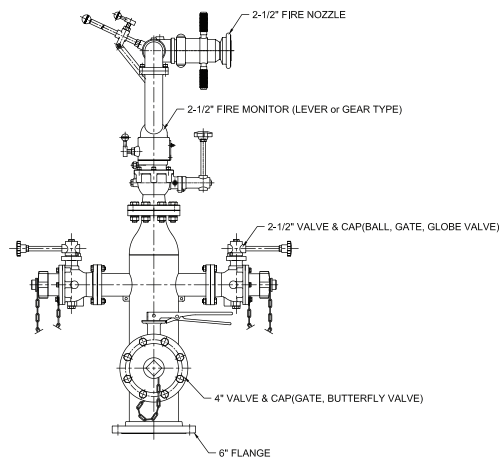
We can manufacture 4" / 6" / 8"



YOH-W100 / Basic 4" Type (2-WAY)



6" Model (3-WAY)



6" Model (4-WAY)

YOH-W100 / Basic 4" Type (2-WAY)

TYPE : NON-SELF DRAINABLE 2-WAY

INLET CONNECTION : 4" OR 6" ANSI #150 FLANGE

HOSE CONNECTION : Two(2) X 2.5" MALE THREAD W/ CAP & CHAIN

PUMP CONNECTION : One(1) X 4.5" or 4" MALE THREAD W/ CAP & CHAIN

MONITOR CONNECTION : ONE(1) X 4" ANSI 300 lbs FF FLANGE *Only for 4-WAY

TEST PRESSURE : 2.0 MPa

PAINT : EPOXY PAINT IN RED OR YELLOW

BODY MATERIAL : CARBON STEEL

COUPLING MATERIAL : BRONZE

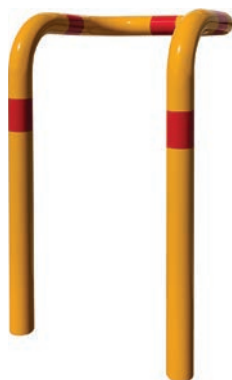
OUTDOOR FIRE HYDRANT

■ Protection bar for Hydrant

This product can help protect hydrant by vehicle or the other things. And also with bright color, user can easily find hydrant location.



YPB-H1



YPB-H2



YPB-H3



YPB-H4



YPB-H5



YPB-H6



YPB-H7



YPB-H8

OUTDOOR FIRE HYDRANT

■ Post Indicator Valve

PIV, same as normal gate valve, however user can check that if valve is opened or closed by on the ground post (GEAR TYPE / LEVER TYPE)



Tamper Switch
(Water proof type)
SLP2130-SW



Tamper Switch
(Explosion proof type)
SLP5130-SW

YPIV-L(100~600)

SIZE : 4" ~ 24" ASME #150 OR KS 10K FF or RF FLANGED

VALVE TYPE : GATE VALVE / NRS / LEVER OPERATION TYPE

PRESSURE TEST : KFI STANDARD

TEST PRESSURE : 1.5 MPa (10 min.)

MATERIAL

VALVE : DUCTILE IRON

POST : CAST IRON

PIPE : SPPS

DISK : STAINLESS STEEL

PAINT

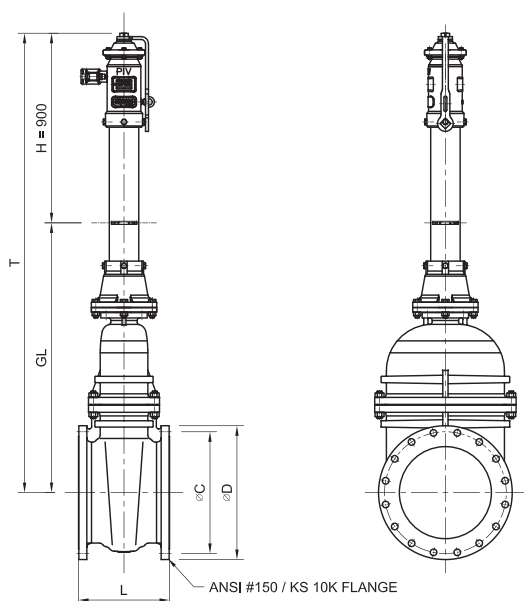
GATE VALVE : GREY COLOR

POST INDICATOR : RED & BLACK

ACCESSORY : TAMPER SWITCH (EXP. / NON-EXP. BOTH TYPE

ADJUSTABLE) LOCKING DEVICE

APPROVAL : KFI



SIZE (A)	DIMENSINO OF KS 10K FLANGES				DIMENSINO OF ANSI #150 FLANGES			
	L	ØD	ØC	n-Øh	L	ØD	ØC	n-Øh
100	229.0	210	175	8-19	229.0	228.6	190.5	8-19
150	267.0	280	240	8-23	267.0	279.4	241.3	8-22
200	292.0	330	290	12-23	292.0	342.9	298.4	8-22
250	330.0	400	355	12-25	330.0	406.4	361.9	10-25
300	356.0	445	400	16-25	356.0	482.6	431.8	12-25
350	381.0	490	445	16-25	381.0	533.4	476.2	12-28
400	406.0	560	510	16-27	406.0	596.9	539.7	16-28
450	432.0	620	565	20-27	432.0	635.0	577.8	16-32
500	457.0	675	620	20-27	457.0	698.5	635.0	20-32
600	508.0	795	730	24-33	508.0	812.8	749.3	20-35

OUTDOOR FIRE HYDRANT

■ Post Indicator Valve

PIV, same as normal gate valve, however user can check that if valve is opened or closed by on the ground post (GEAR TYPE / LEVER TYPE)



Tamper Switch
(Water proof type)
SLP2130-SW



Tamper Switch
(Explosion proof type)
SLP5130-SW

YPIV-G(100~600)

SIZE : 4" ~ 24" ASME #150 OR KS 10K FF or RF FLANGED

VALVE TYPE : GATE VALVE / NRS / GEAR OPERATION TYPE

TEST PRESSURE : 1.5 MPa (10 min.)

MATERIAL

VALVE : DUCTILE IRON

POST : CAST IRON

PIPE : SPPS

DISK : STAINLESS STEEL

PAINT

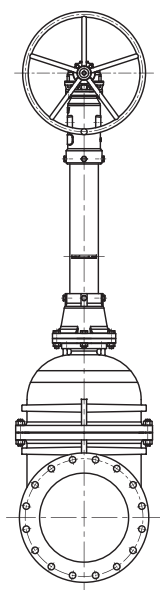
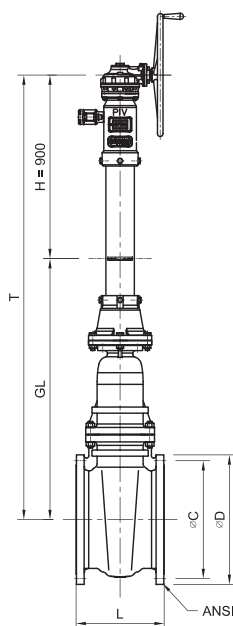
GATE VALVE : GREY COLOR

POST INDICATOR : RED & BLACK

ACCESSORY : TAMPER SWITCH (EXP. / NON-EXP. BOTH TYPE

ADJUSTABLE) LOCKING DEVICE

APPROVAL : KFI



SIZE (A)	DIMENSINO OF KS 10K FLANGES				DIMENSINO OF ANSI #150 FLANGES			
	L	ØD	ØC	n-Øh	L	ØD	ØC	n-Øh
100	229.0	210	175	8-19	229.0	228.6	190.5	8-19
150	267.0	280	240	8-23	267.0	279.4	241.3	8-22
200	292.0	330	290	12-23	292.0	342.9	298.4	8-22
250	330.0	400	355	12-25	330.0	406.4	361.9	10-25
300	356.0	445	400	16-25	356.0	482.6	431.8	12-25
350	381.0	490	445	16-25	381.0	533.4	476.2	12-28
400	406.0	560	510	16-27	406.0	596.9	539.7	16-28
450	432.0	620	565	20-27	432.0	635.0	577.8	16-32
500	457.0	675	620	20-27	457.0	698.5	635.0	20-32
600	508.0	795	730	24-33	508.0	812.8	749.3	20-35

FIRE MONITOR



Ball-Valve Assembled Type & Gear Type
Basic Lever Type & Fire Monitor Elbow
S-Type Gear Operated Monitor
Remote Controlled Monitor by Electric Power

FIRE MONITOR

■ Ball-Valve Assembled Type & Gear Type

Fire monitor, it can extinguish a large scale fire disaster that occurs in the plant industries, Chemical factory, LPG factory and etc. Lever type, Gear type or Electric operating type, customer can choose with their needs.



YFM-BL65



YFM-BG65

SPECIFICATIONS

MODEL	DRIVING TYPE	INLET SIZE	OUTLET SIZE	MATERIAL(BODY)	TEST PRESSURE	DRIVING RANGE		
						UP	DOWN	RIGHT/LEFT
YFM-BL65	LEVER	2.5" OR 4"	FE65	BRONZE	2.0 MPa	+90°	-45°	360°
YFM-BG65	GEAR	2.5" OR 4"	FE65	BRONZE	2.0 MPa	+90°	-45°	360°

*KFI APPROVED

■ Basic Lever Type & Fire Monitor Elbow



YFM-L65



YEL-M100 / YEL-M150

SPECIFICATIONS

MODEL	DRIVING TYPE	CONN. SIZE	OUTLET SIZE	MATERIAL(BODY)	TEST PRESSURE	DRIVING RANGE		
						UP	DOWN	RIGHT/LEFT
YFM-L65	LEVER	2.5" OR 4"	FE65	BRONZE / DUCTILE IRON / AL-ALLOY	2.0 MPa	+90°	-45°	360°
ELBOW MODEL	APPLICATION		SIZE			MATERIAL		
YEL-M100	4"HYDRANT		2.5"X 4"ANSI #150 FF FLANGED			CAST IRON		
YEL-M150	6"HYDRANT		4"ANSI #300 X 4"ANSI #150 FF FLANGED			CAST IRON		

*KFI APPROVED

FIRE MONITOR

■ S-TYPE Lever Operated Monitor



SPECIFICATIONS

MODEL	DRIVING TYPE	INLET SIZE	OUTLET SIZE	MATERIAL(BODY)	TEST PRESSURE	DRIVING RANGE	
						UP	DOWN
YFM-LS65	LEVER	2.5" OR 4"	FE65	BRONZE / AL-ALLOY	2.0 MPa	+90°	-45°

■ S-TYPE Gear Operated Monitor



SPECIFICATIONS

MODEL	DRIVING TYPE	INLET SIZE	OUTLET SIZE	MATERIAL(BODY)	TEST PRESSURE	DRIVING RANGE		
						UP	DOWN	RIGHT/LEFT
YFM-G65S	GEAR	2.5" OR 4"	FE65	BRONZE / AL-ALLOY	2.0 MPa	+90°	-45°	360°

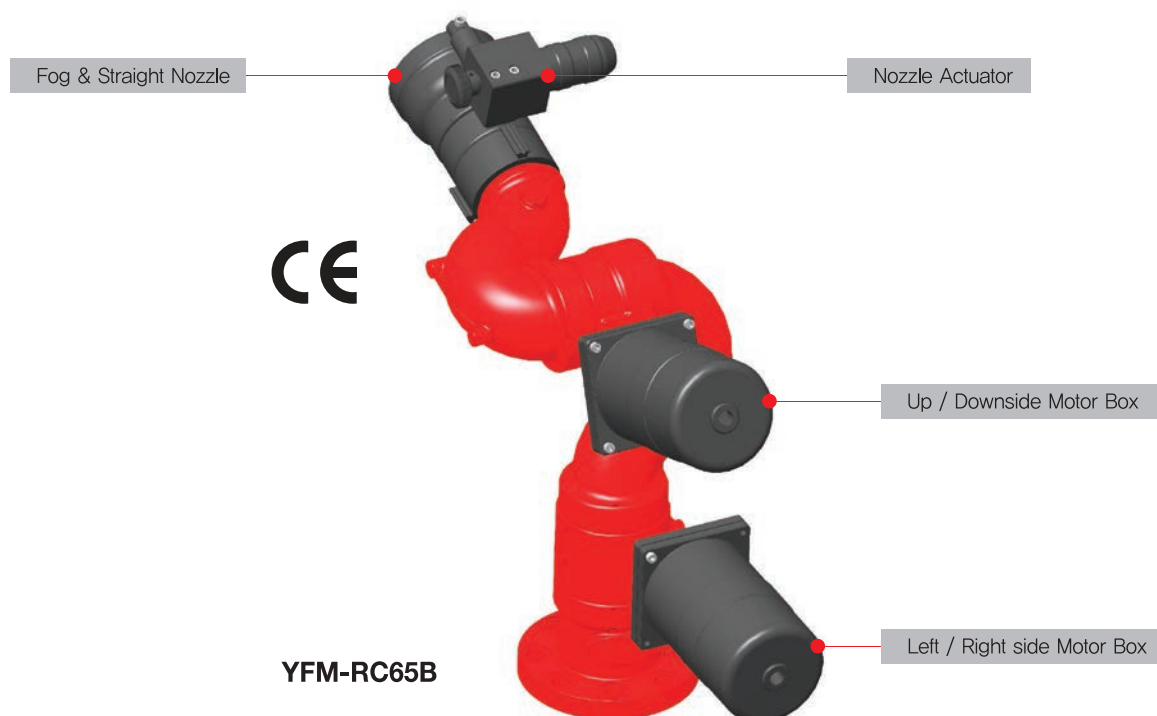
Features

- 1) Ball-valve can assembly
- 2) 2-1/2" KS 16K OR #150 ANSI Flange

FIRE MONITOR

■ Remote Controlled Monitor by Electric Power

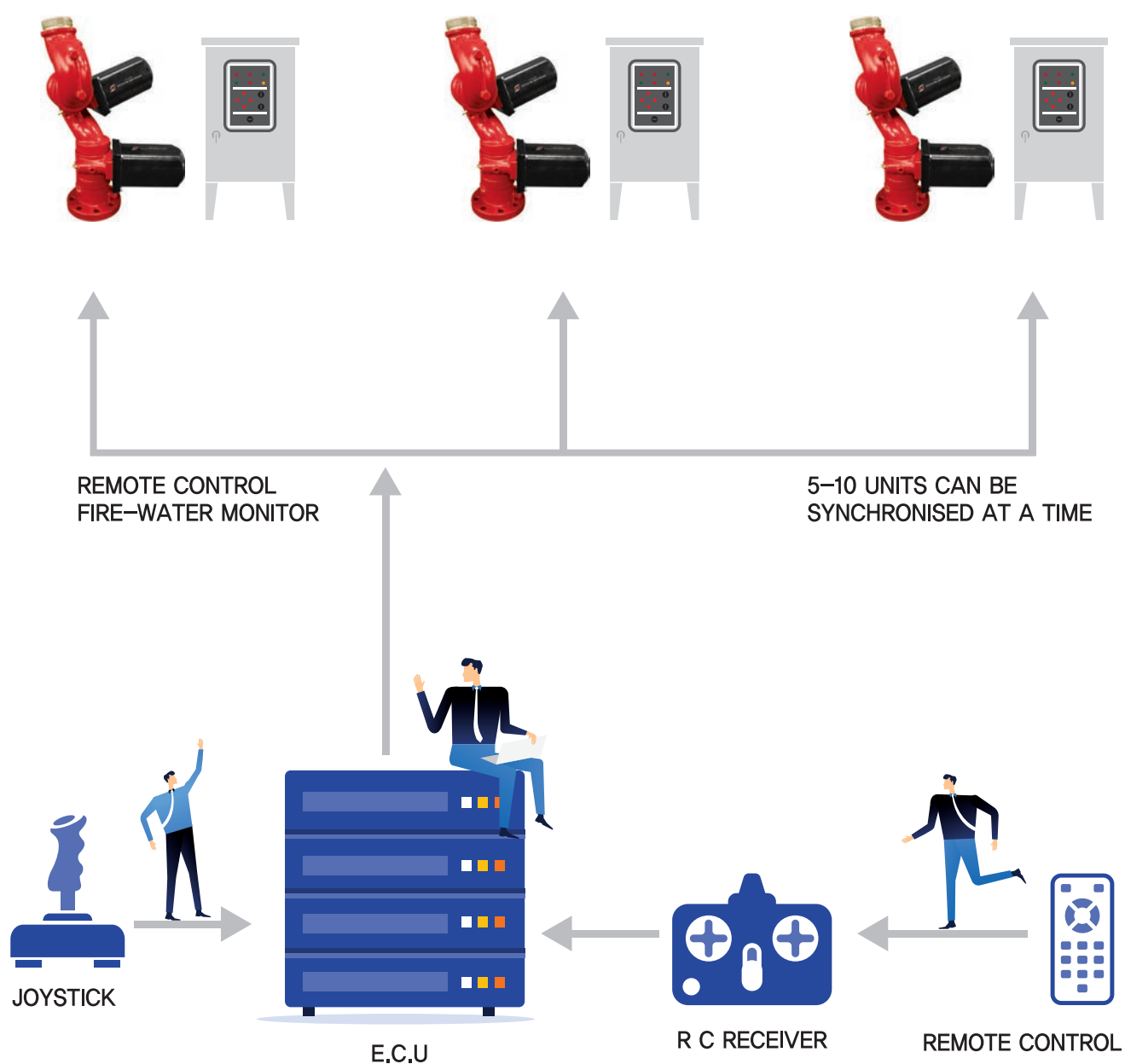
Just push the button, you can move fire monitor's shooting direction very easily. Also using the camera, you can control fire monitor when you are not located near the fire monitor.



SPECIFICATIONS

MODEL	YFM-RC65B
INLET SIZE	Inlet 4" (ANSI #150 FF Flanged) OR 4" OR 2-1/2" KS 16K OR ANSI #150 FF FLANGE
OUTLET SIZE	2-1/2" FEMALE Threaded OR 2-1/2" NH Male Threaded
MATERIAL	Body : Bronze Nozzle : Al-alloy
MOVEMENT ANGLE	Vertical : +85° ~ -45° Horizontal : 340° (Left -170° / Right -170°)
POWER SUPPLY	Monitor : AC 220V or DC 24V Nozzle : DC 24V
MAX FLOW RATE	500GPM(1900 L/min) at 0.7 MPa

Remote Controlled Monitor by Electric Power



VALVES AND COUPLING FOR FIRE EQUIPMENT



Fire Department Connection

UL LISTED

Y-Coupling / 2-Way Ball Valve

Bronze Butterfly Valve (GROOVED TYPE)

Bronze Butterfly Valve (THREADED TYPE)

DCI Butterfly Valve (GROOVED TYPE)

DCI Butterfly Valve (WAFER TYPE)

Hydrant Connection Stand Pipe

Pressure Reduce Device

Suction Coupling

Siamese Coupling

Intermediate Coupling

Auto Drain Valve

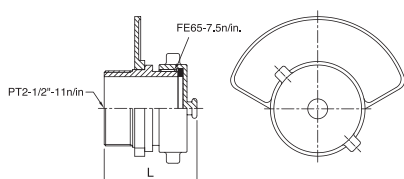
Relief Valve

Water Valve

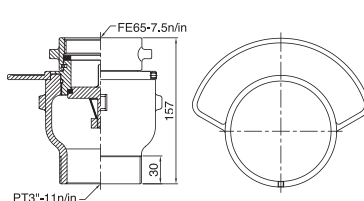
Deluge Valve

VALVES AND COUPLING FOR FIRE EQUIPMENT

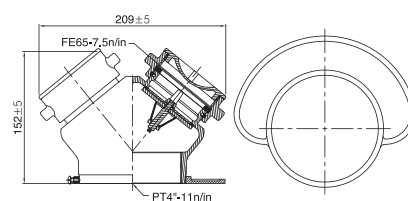
■ Fire Department Connection



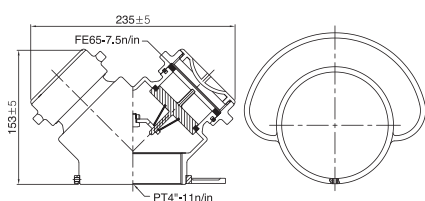
YFD-A65 (A Type)



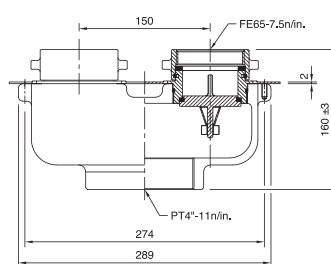
YFD-C65 (C Type)



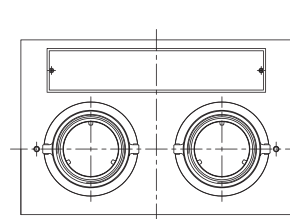
YFD-E65B (E Type)



YFD-E65S (E Type)



YFD-F65B (F Type)



YFD-F65S (F Type)

MODEL	CONN. SIZE	OUTLET SIZE	MATERIAL
YFD-A65(A-TYPE)	ONE(1) X FE65(MALE)	PT 2½ (MALE)	BRONZE
YFD-C65(C-TYPE)	ONE(1) X FE65(FEMALE)	PT 3 (MALE)	CAST IRON & BRONZE
YFD-E65B(E-TYPE BRONZE)	TWO(2) X FE65(FEMALE)	PT 4" (FEMALE)	BRONZE
YFD-E65S(E-TYPE STS)			STAINLESS STEEL
YFD-F65B(F-TYPE BRONZE)	TWO(2) X FE65(FEMALE)	PT 4" (FEMALE)	CAST IRON & BRONZE
YFD-F65S(F-TYPE STS)			CAST IRON & STAINLESS STEEL

VALVES AND COUPLING FOR FIRE EQUIPMENT

■ UL LISTED

Yooksong YIH-UL Series Indoor Fire Hydrant is an indoor pipe network that supplies a fire water in the event of a fire. It has a valve interface and is used for indoor fixed fire-fighting facilities such as factories, warehouses, high-rise buildings, and public buildings. It is usually installed in the indoor hydrant cabinet with fire hoses and water nozzles. We have largely two different types of Indoor Fire Hydrants depending on the material of the valve.

- Bronze: YIH-UL40(1½"), and YIH-UL65(2½")

Features

- Easy operation
- Reliable performance
- Compact Design
- A Wide Range of Adapters including Gost, Machino, Storz, NH, BS336 and FE



YIH-UL40 / YIH-UL65

Applicable Standard

Indoor Hydrant according to NFPA 24
HOSE VALVE UL 19

Applications

Warehouse
Factory
Building

Accessories / Optional

Coupling
Pressure Reduce Device
Various sizes (1", 1½", and 2½")

Adapters & Couplings

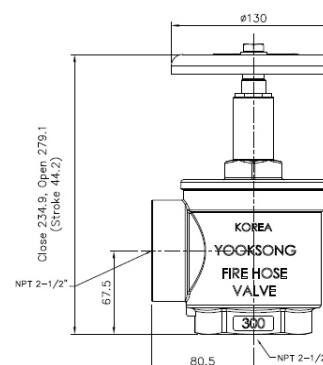
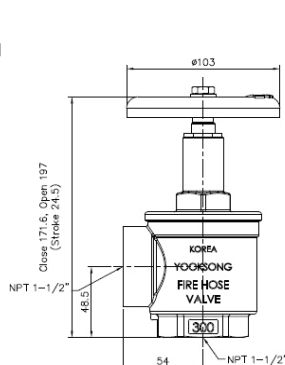
Yooksong provides a wide range of fire hose couplings, fire fittings and adapters, including Gost hose couplings, Machino hose couplings, Nakajima hose couplings, Storz hose couplings, NH hose couplings, BS336 hose couplings, FE hose couplings and fittings. These are manufactured in corrosion resistant material, bronze and al-alloy and are suitable for both onshore and offshore applications. If requested, all hose couplings above can be applied to the indoor hydrant.

Note

1. It can be operated with different performance depending on the sizes and types of the couplings & adapters.

Technical Specification

Test Pressure: Disc – 30 Barg / Body – 40 Barg



VALVES AND COUPLING FOR FIRE EQUIPMENT

■ Y-Coupling / 2-Way Ball Valve



SPECIFICATIONS

MODEL	INLET SIZE	OUTLET SIZE	TEST PRESSURE	MATERIAL	APPROVAL
YYC-40	FE40	TWO(2) X FE25	3.0 MPa	AL-ALLOY	KFI
YYC-65	FE65	TWO(2) X FE40			
YYC-100T	FE100	TWO(2)XFE65(Female)		GC450	
YYC-100F	4" ANSI #150 FF FLG.	TWO(2)XFE65(Male)		BRONZE	
YYC-65B	NH2-1/2"	TWO(2) X NH2-1/2"			
YYC-65C	FE65	TWO(2) X FE65 (Male)		AL-ALLOY	

■ Ball Valve for Fire Truck



SPECIFICATIONS

MODEL	CONN. SIZE (IN X OUT)	TEST PRESSURE	MATERIAL		REMARK
YBV-C65	FE65 (M) X FLG. 2½"	2.0 MPa	Al-alloy	PAINTING COLOR : RED OR BLACK FLG. TYPE : FF	RH : RIGHT HAND LH : LEFT HAND
YBV-D65	FLG. 2½" X FE65 (M)				
YBV-B65	FE65 (F) X FLG. 2½"				
YBV-S75	FE75 (M) X FLG. 3"				
YBV-S100	FE100 (M) X FLG. 4"				
YBV-M100	FLG.4" X FLG. 4"		Al-alloy		

VALVES AND COUPLING FOR FIRE EQUIPMENT

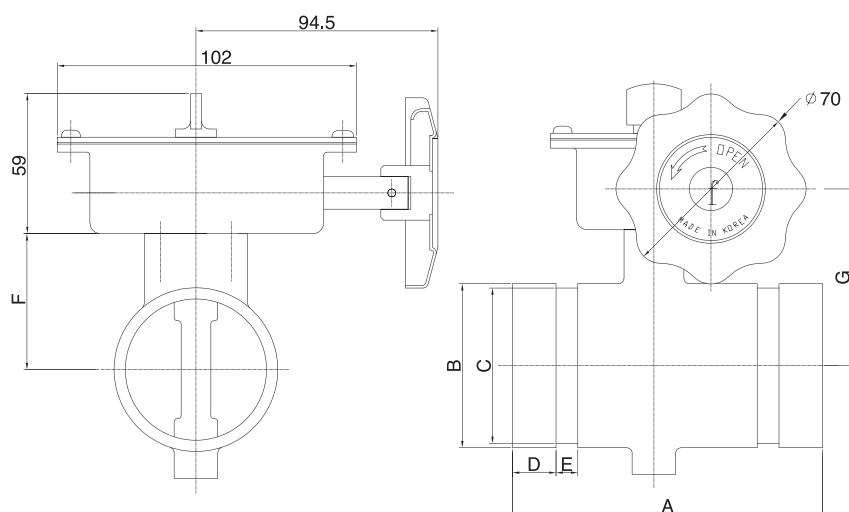
■ BRONZE BUTTERFLY VALVE (GROOVED TYPE)

YOOKSONG'S Butterfly valve has a high quality with UL certificate. (Grooved or Threaded)



SPECIFICATIONS

MODEL	YSBBV-G(50~65) - BRONZE BUTTERFLY VALVE	
TYPE	GROOVED TYPE	
WORKING PRESSURE	1.2 MPa	
MAX. TEST PRESSURE	2.5 MPa	
MAX. WORKING TEMP.	120°C (250°F)	
TAMPER SWITCH	2 EA	
MATERIAL	BODY	ASTM B-584
	DISC	ASTM B-583 EPDM ENCAPSULATED
UPPER STEM	ASTM A-564 TYPE XM 12	
LOWER STEM	ASTM A-564 TYPE XM 12	
GEAR HOUSING, COVER	ASTM A-619	
HAND WHEEL	ASTM A-619	
FLAG INDICATOR	ASTM B-16	
YORK MECHANISM	ASTM A-283	
STEM BUSHING	ASTM B-16	
CONDUIT CONNECTOR	ASTM-B-16	
O-RING(ALL)	EPDM GRADE E"	
COVER GASKET	EPDM	

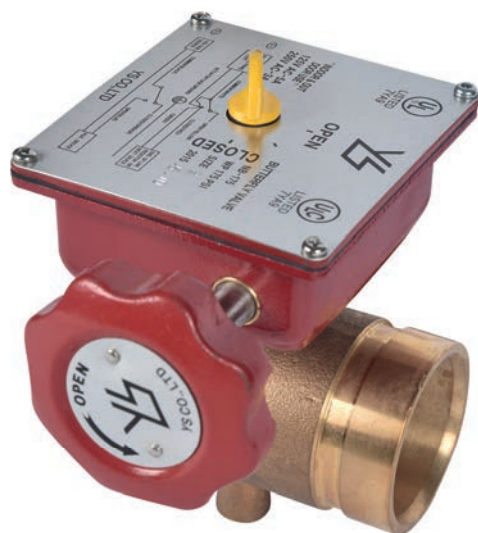


SPECIFIC DIMENSION							
SIZE (Inch)	A(mm)	B(mm)	C(mm)	D(mm)	E(mm)	F(mm)	G(mm)
2"	114	60,3	57,15	16	8	50	90,5
2½"	114	75	69,1	16	8	60	95,5

VALVES AND COUPLING FOR FIRE EQUIPMENT

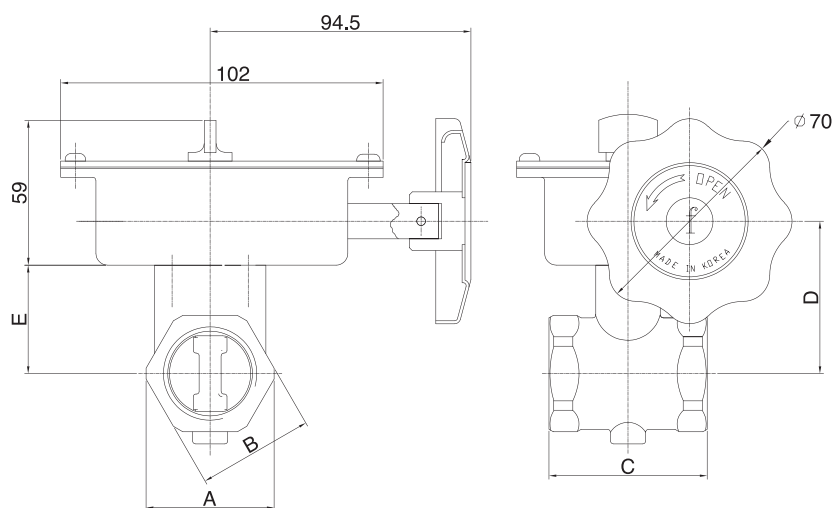
■ BRONZE BUTTERFLY VALVE (THREADED TYPE)

YOOKSONG'S Butterfly valve has a high quality with UL certificate. (Grooved or Threaded)



SPECIFICATIONS

MODEL	YSBBV-T(25 ~ 65) - BRONZE BUTTERFLY VALVE	
TYPE	THREADED TYPE	
WORKING PRESSURE	1.2 MPa	
MAX. TEST PRESSURE	2.5 MPa	
MAX. WORKING TEMP.	120°C (250°F)	
TAMPER SWITCH	2 EA	
MATERIAL	BODY	ASTM B-505
	DISC	ASTM B-583 EPDM ENCAPSULATED
UPPER STEM	ASTM B-584	
LOWER STEM	ASTM A-564 TYPE XM 12	
GEAR HOUSING, COVER	ASTM A-619	
HAND WHEEL	ASTM A-619	
FLAG INDICATOR	ASTM B-16	
YORK MECHANISM	ASTM A-283	
STEM BUSHING	ASTM B-16	
CONDUIT CONNECTOR	ASTM A-30	
O-RING(ALL)	EPDM GRADE E"	
COVER GASKET	EPDM	



SPECIFIC DIMENSION					
SIZE (Inch)	A(mm)	B(mm)	C(mm)	D(mm)	E(mm)
1"	43.7	39.7	54	52	37
1¼"	54	49	67	56	41
1½"	60	56	73	59	50
2"	76	70	82.4	65	60
2½"	90	84	104	75	60

VALVES AND COUPLING FOR FIRE EQUIPMENT

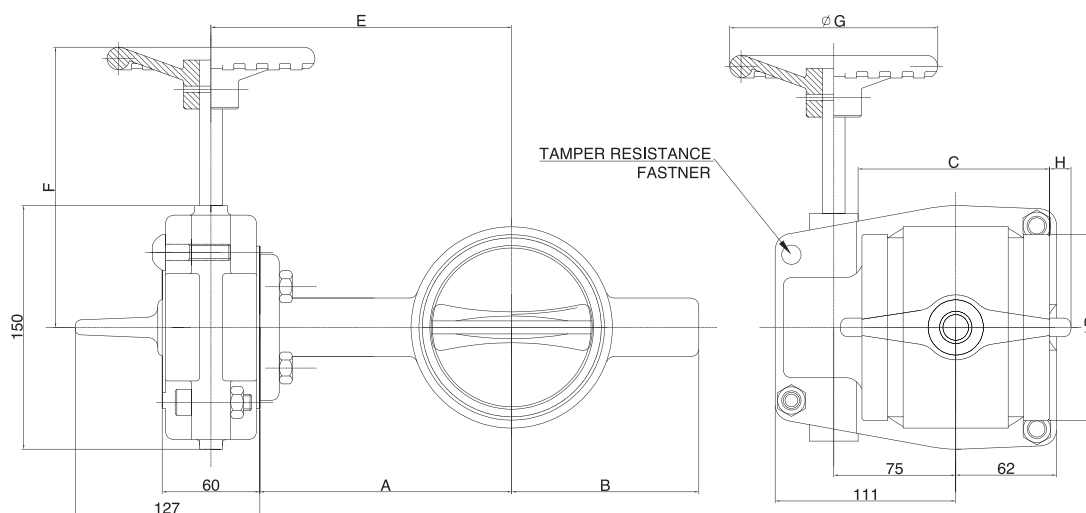
■ DCI BUTTERFLY VALVE (GROOVED TYPE)

YOOKSONG'S DCI Butterfly valve has a high quality with UL certificate. (Grooved, Wafer)



SPECIFICATIONS

MODEL	YSDBV-G(65 ~ 200) - DCI BUTTERFLY VALVE	
TYPE	GROOVED TYPE	
WORKING PRESSURE	1.2 MPa	
MAX. TEST PRESSURE	2.5 MPa	
MAX. WORKING TEMP.	120°C (250°F)	
TAMPER SWITCH	2 EA	
MATERIAL	BODY	ASTM A - 536 NYLON - 11 COATED
	DISC	ASTM A - 536 EPDM ENCAPSULATED
UPPER STEM	AISI 420	
WORM GEAR SHAFT	ASTM A-276	
HOUSING	ASTM A-276	
HAND WHEEL	ASTM A - 536	
FLAG INDICATOR	ASTM A - 536	
	SHEAR PIN - ASTM 510	
SEGMENT GEAR	ASTM B-584	
HOUSING GASKET	EPDM GRADE E"	
O-RING(ALL)	EPDM GRADE E"	



SPECIFIC DIMENSION								
SIZE (Inch)	A(mm)	B(mm)	C(mm)	D(mm)	E(mm)	F(mm)	G(mm)	H(mm)
2½"	105	85	96.4	73	135	135	128	-
3"	112	92	96.4	174.3	142	135	128	-
4"	145	108	115.4	188.9	175	135	128	-
6"	180	145	132.4	114.3	210	193	220	11.2
8"	204	170	132.4	219.1	232	193	220	24

VALVES AND COUPLING FOR FIRE EQUIPMENT

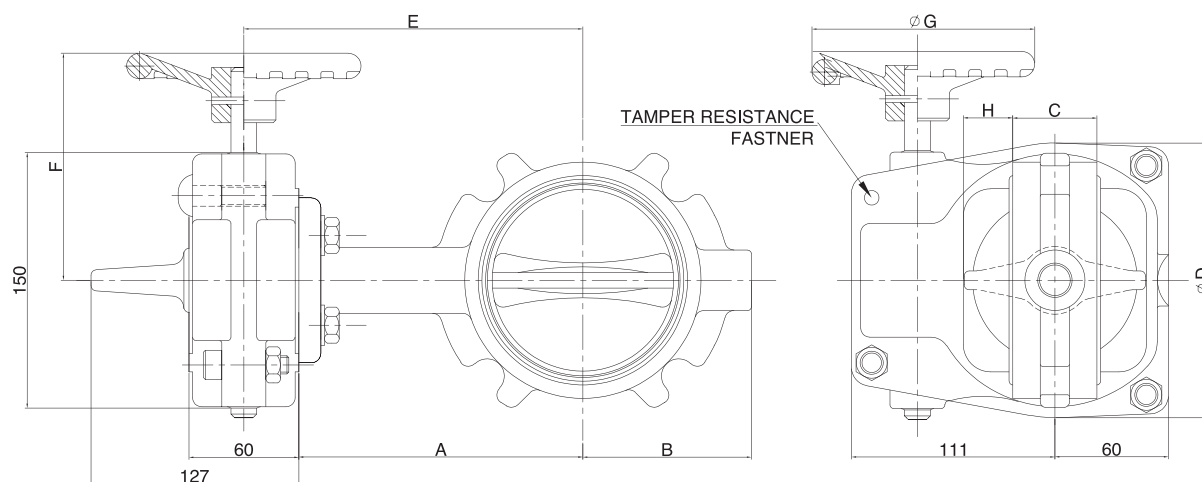
■ DCI BUTTERFLY VALVE (WAFER TYPE)

YOOKSONG'S DCI Butterfly valve has a high quality with UL certificate. (Grooved, Wafer)



SPECIFICATIONS

MODEL	YSDBV-W(65 ~ 200) - DCI BUTTERFLY VALVE	
TYPE	WAFER TYPE	
WORKING PRESSURE	1.2 MPa	
MAX. TEST PRESSURE	2.5 MPa	
MAX. WORKING TEMP.	120°C (250°F)	
TAMPER SWITCH	2 EA	
MATERIAL	BODY	ASTM A - 536 EPDM ENCAPSULATED
	DISC	ASTM B - 148 Ni - Cr PLATED
UPPER STEM	ASTM A-276	
WORM GEAR SHAFT	ASTM A-276	
HOUSING	ASTM A - 536	
HAND WHEEL	ASTM A - 536	
FLAG INDICATOR	ASTM A - 536	
	SHEAR PIN - ASTM 510	
SEGMENT GEAR	ASTM B-584	
HOUSING GASKET	EPDM GRADE E"	
O-RING(ALL)	EPDM GRADE E"	



SPECIFIC DIMENSION								
SIZE (Inch)	A(mm)	B(mm)	C(mm)	D(mm)	E(mm)	F(mm)	G(mm)	H(mm)
2½ "	125	85	46	94	135	155	125	9.5
3 "	132	92	46	107	142	135	125	16
4 "	145	108	52	128	175	135	125	25
6 "	179	145	56	182	210	193	225	45.3
8 "	204.5	170	60	234	232	193	225	68.5

VALVES AND COUPLING FOR FIRE EQUIPMENT

■ Hydrant Connection Stand Pipe

Stand pipe, connecting to flush type of hydrant (Underground type)

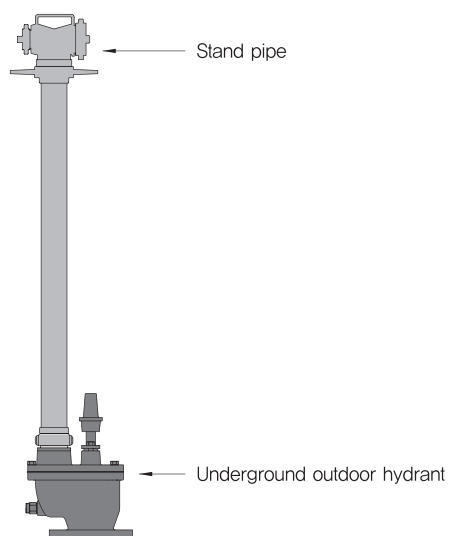


YSP-65B

SPECIFICATIONS

MODEL	HYDRANT CONN. SIZE	HOSE CONN. SIZE	WORKING PRESSURE	MATERIAL	LENGTH
YSP-65A	FE65	(1) X FE65	1.5 MPa	BODY : AL-ALLOY COUPLING : BRONZE	1,100 mm
YSP-65B	FE65	(1) X FE65 (1) X FE40	1.5 MPa		
YSP-65C	FE65	(2) X FE65	1.5 MPa		

Installation
example



■ Pressure Reduce Device

PRD can reduce water pressure 50%



YRD-25



YRD-40A



YRD-40B



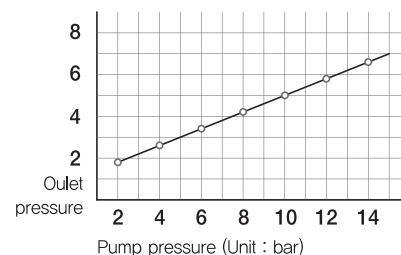
YRD-65A



YRD-65B

SPECIFICATIONS

MODEL	CONN. SIZE	TSET PRESSURE	LENGTH (mm)	MATERIAL
YRD-25	FE25 X FE25	2.0 MPa	24	AL-ALLOY
YRD-40A	FE40 X FE40		36	
YRD-65A	FE65 X FE65		54	
YRD-40B	FE40 X FE40		36	BRONZE
YRD-65B	FE65 X FE65		54	



VALVES AND COUPLING FOR FIRE EQUIPMENT

■ Suction Coupling

This suction coupling is for connects to suction hose.



YSC-S65



YSC-S75



YSC-S100



YSC-S150

SPECIFICATIONS

MODEL	OUTLET SIZE	TEST PRESSURE	MATERIAL	APPROVAL
YSC-S65	FE65 X FE65	2.0 MPa	AL-ALLOY	KFI APPROVED
YSC-S75	FE75 X FE75			
YSC-S100	FE100 X FE100			
YSC-S150	FE150 X FE150			

■ Siamese Coupling

Yooksong can manufacture any type of coupling for fire fighting



MODEL	SIZE	SPEC.
YSC-FF	25x25, 40x40, 65x65	FE(F) * FE(F)
YSC-MM		FE(M) * FE(M)
YSC-FM		FE(F) * FE(M)
YSC-PTMM		PT(M) * FE(M)
YSC-FMPT		FE(F) * PT(M)
YSC-PTFM		PT(F) * FE(M)
YRC-RFF	40X25, 65x25, 40x40, 65x40, 65x65	FE(F) * FE(F)
YRC-RFM	40X25, 65x25, 40x40, 65x40, 65x65, 100x65	FE(F) * FE(M)
YRC-FM	40x25, 65x25, 65x40, 75x65, 100x65, 65x75	FE(F) * FE(M)
YRC-MF	40x25, 65x25, 65x40, 75x65, 100x65, 65x75	40(F) * 65(M)

VALVES AND COUPLING FOR FIRE EQUIPMENT

■ Intermediate Coupling

Reducing size of connection



YRC-MF25AL



YRC-MF65B



YRC-MF65A

SPECIFICATIONS

MODEL	SIZE	MATERIAL	MODEL	SIZE	MATERIAL
YRC-MF25AL	FE40(F) X FE25(M)	AL-ALLOY	YRC-MF(65X40)B	FE65(F) X FE40(M)	BRONZE
YRC-MF(40X25)	FE40(F) X FE25(M)		YRC-MF(100X65)	FE100(F) X FE65(M)	AL-ALLOY
YRC-MF(65X25)	FE65(F) X FE25(M)		YRC-MF(100X75)	FE100(F) X FE75(M)	
YRC-MF(65X40)	FE65(F) X FE40(M)				

■ Auto Drain Valve

Automatic drain valve with Check valve style



MODEL	INLET	OUTLET	OPERATION	PRESSURE	MATERIAL	LENGTH
YAD-20	PF 3/4" (F)	PT 1" (M)	OPEN 0.03 MPa	CLOSE 0.06 MPa	BRASS	40 mm

■ Relief Valve

Relief valve install in the pump station room for when checking fire pump flow rate, and working pressure



MODEL	SIZE	WORKING PRESSURE	MATERIAL
YRV-10B	1"(25mm) / 10K	0.15~1.0 MPa	Brass (BRONZE)
YRV-20B	1"(25mm) / 20K	0.15~1.0 MPa	Brass (BRONZE)

■ Water Valve

Gate valve (Soft-sealed type) (EPDM rubber coated to valve disc)

MODEL	SIZE	WORKING PRESSURE	MATERIAL
YWV-(100/150)	4" (100 mm) 6" (150 mm)	1.0~1.5 MPa	WORKING PRESSURE: 1.0 ~ 1.5 MPa WORKING TEMP.: 5 °C ~ 60 °C MATERIAL BODY – CAST IRON DISC – EPDM RUBBER COATED



Epoxy coating



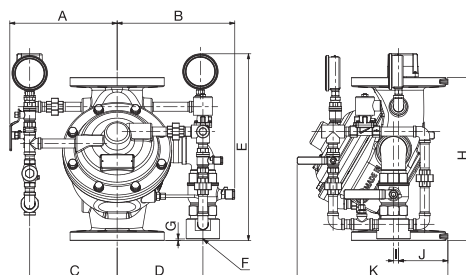
Powder coating

VALVES AND COUPLING FOR FIRE EQUIPMENT

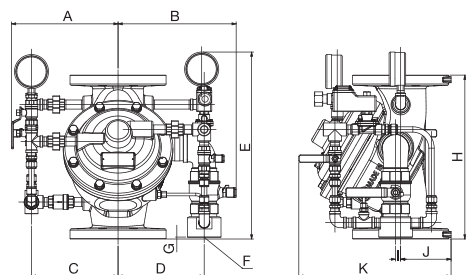
■ Deluge Valve

Assemble instruction makes perfectly close and easy maintenance. It is a cylinder type so you can install horizontal or vertical way of piping line.

Very low friction loss, and it has solenoid valve.



YDV1 = KS 16K / YDV2 = KS 10K (FF TYPE)



YDV(3/4)- ANSI #150 (FF TYPE)

SPECIFICATIONS

KS 16K (FF FLANGE)												
MODEL	A	B	C	D	E	F(DRAIN)	G	H	I	J	K	압력손실
YDV1-100	257	282	210	205	447	50A	4	390	12	118	361	20,3 kPa
	247	258	200	198	447	25A	46	390	12	118	361	
YDV1-150	285	326	237	250	509	50A	9	500	45	156	432	20,5 kPa
	285	289	237	241	509	25A	51	500	45	156	432	
KS 10K (FF FLANGE)												
MODEL	A	B	C	D	E	F(DRAIN)	G	H	I	J	K	
YDV2-80	243	239	197	183	411		13,5	350	15	98	333	
YDV2-100	244	254	199	198	436	25A	57,5	390	12	111	353	
YDV2-150	282	297	237	241	498		62,3	500	45	145	421	
ANSI #150 (FF FLANGE) / 방폭형												
MODEL	A	B	C	D	E	F(DRAIN)	G	H	I	J	K	
YDV3-80	272	250	199	182	482	32A	4	350	15	100	335	
YDV3-100	280	282	206	205	507	50A	4	390	12	120	363	
YDV3-150	322	325	249	249	569	50A	9	500	45	145	421	
YDV3-250	369	352	296	276	644	50A	48	620	68	177	509	
ANSI #150 (FF FLANGE) / 비방폭형												
MODEL	A	B	C	D	E	F(DRAIN)	G	H	I	J	K	
YDV4-80	247	250	199	182	422	32A	4	350	15	100	335	
YDV4-100	254	282	206	205	445	50A	4	390	12	120	363	
YDV4-150	297	325	249	249	509	50A	9	500	45	145	421	
YDV4-250	343	352	296	276	620	50A	48	620	68	177	509	

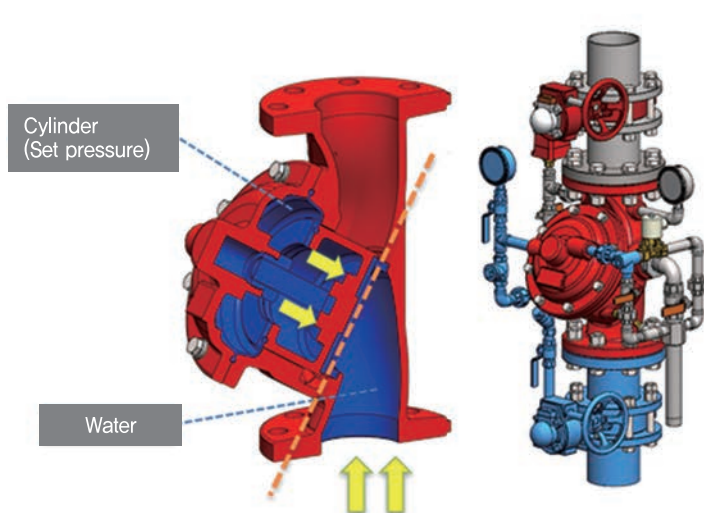
VALVES AND COUPLING FOR FIRE EQUIPMENT

■ Deluge Valve

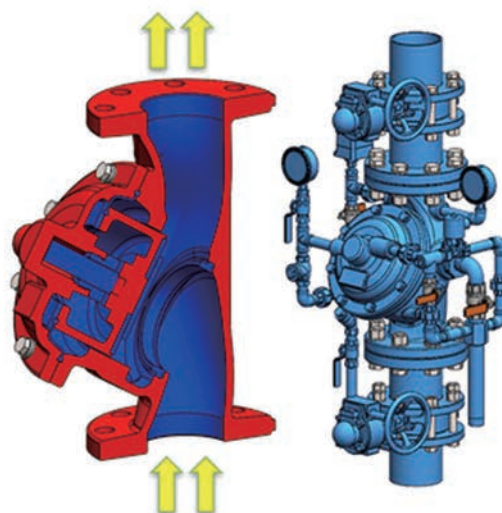
- Water flow works

Setting moment

(When water does not flow)



Working moment



- Automatically recover

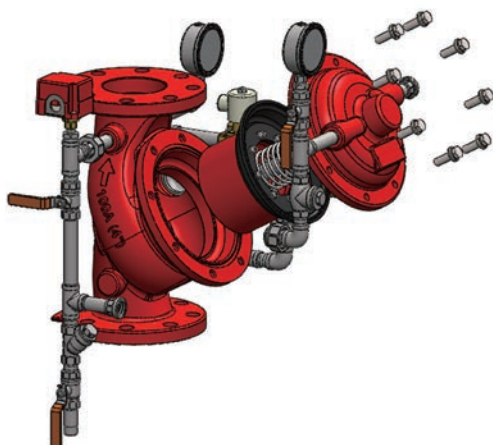
After fire extinguished, close the solenoid, valve recover automatically.

- Easy maintenance

Just dis-assemble cover, you can exchange inside parts.

KS 10K

Size	1.0 MPa – 80A / 100A / 150A
Working pressure	1.0 MPa – 80A / 100A / 150A
Operation	Diaphragm type
Flow type	Water
Material	Body, Cylinder (GCD 450)
	Seat-ring (Bronze)
	Diaphragm/Seat (NBR)



ANSI #150

Size	1.0 MPa – 3" / 4" / 6" / 8"
Working pressure	0.15 MPa ~ 1.4 MPa
Operation	Diaphragm type
Flow type	Water
Material	Body, Cylinder (GCD 450)
	Seat-ring (Bronze)
	Diaphragm/Seat (NBR)

Tunnel type

Size	1.6 MPa – 100A, 150A
Working pressure	0.15 ~ 2.2 MPa
Operation	Diaphragm type
Flow type	Water
Material	Body, Cylinder (GCD 450)
	Seat-ring (Bronze)
	Diaphragm/Seat (NBR)

FOAM EQUIPMENT



Foam Hydrant Cabinet
Air Foam Chamber
Foam Liquid Tank
Riser Strainer
Pressure Proportioner
Line Proportioner
Foam Trailer (Electric Operated)
Mobile Foam Trailer
(Monitor Attached) TYPE – B
Mobile Foam Unit (200 L)
FOAM TRAILER (Trailer Jack Type)
Foam Concentrate

FOAM EQUIPMENT

■ Foam Hydrant Cabinet

Korean style 〈Foam Hydrant〉, very solid type of cabinet, fully compact size.



Front



Inside Feature

SPECIFICATIONS

MODEL	SIZE		MATERIAL	약제 탱크 용량	APPROVAL
YFH-FH200	1000X1400X570 (mm)	LEG 200 mm	STS304 1.5 THK	200 L	KFI
YFH-FH360	1200X1600X640 (mm)			360 L	
YFH-FH400				400 L	

Components

1. Foam tank (200 / 360 / 400 L)
2. Fire hose
3. Foam nozzle
4. Foam proportioner

FOAM EQUIPMENT

■ Air Foam Chamber

Install at the top of the oil tank, when fire occurs inside of oil tank, it spreads foam immediately to inside of oil tank and extinguish fire.

Deflector (CRT , FRT type)

- Can provide test hole type



* Deflector can be install

YAFC

SPECIFICATIONS

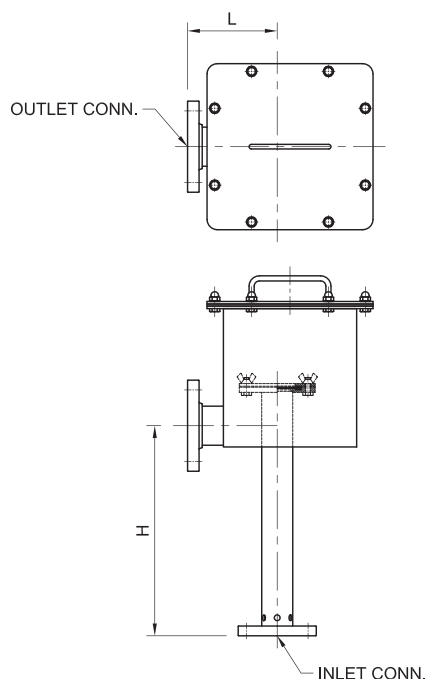
FLANGE TYPE	TYPE	MATERIAL	DEFLECTOR	PAINT
ANSI #150 FLANGE KS 10K(16K) FLANGE	SQUARE TYPE	CARBON STEEL STAINLESS STEEL (STS304)	C.R.T (Type- II) F.R.T (SPECIAL)	RED / YELLOW

TYPE	SIZE		DISCAHRGE CAPACITY (0.35 MPa)
	INLET	OUTLET	
YAFC-50A	2"	2-½"	100 ~ 250 L/min
YAFC-50B	2"	3"	100 ~ 350 L/min
YAFC-65	2-½"	3"	200 ~ 750 L/min
YAFC-80	3"	4"	450 ~ 1,000 L/min
YAFC-100	4"	6"	750 ~ 1,950 L/min
YAFC-150A	6"	8"	1,400 ~ 2,000 L/min
YAFC-150B	6"	10"	1,400 ~ 2,000 L/min

SPECIAL FEATURE

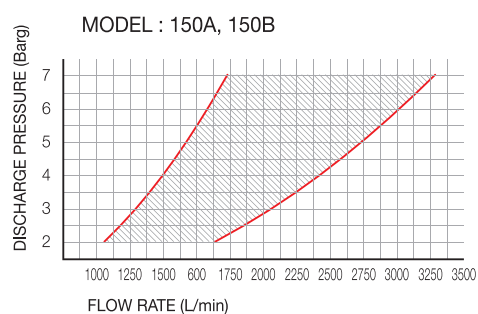
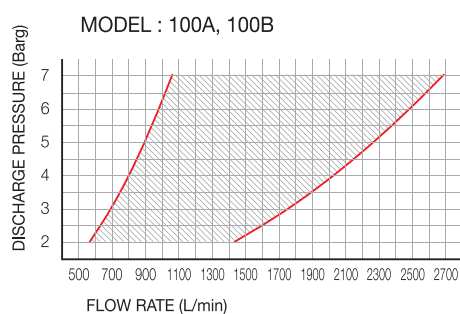
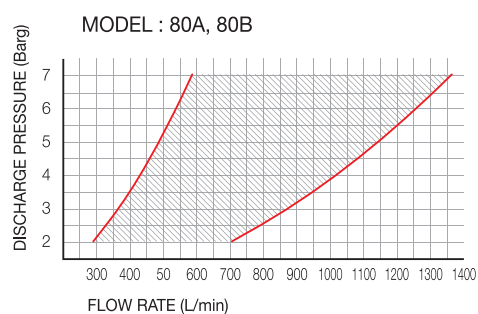
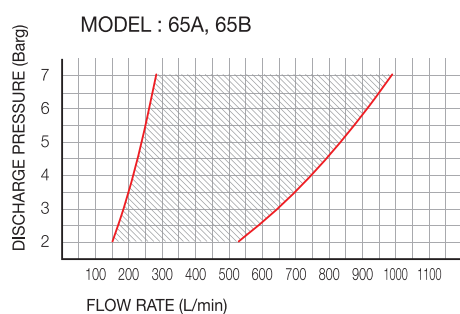
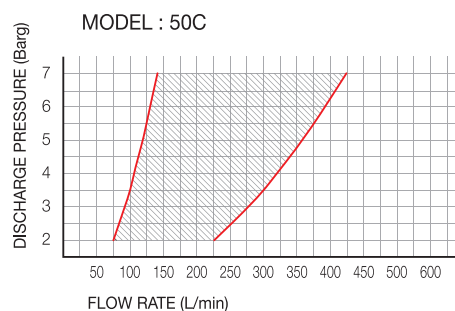
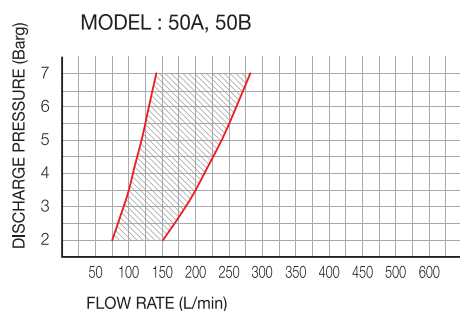
- Sealing glass break pressure : 0.7~1.75 barg

FOAM EQUIPMENT



SPECIFICATIONS

TYPE	SQUARE TYPE
FLANGE	ANSI #150 / KS 10K / JIS 10K
MATERIAL	CARBON STEEL or STAINLESS STEEL
WORKING PRESSURE	2~7 Barg
VAPOR SEAL BURST PRESSURE	0,7~1,75 Barg
PAINTING COLOR	FIRE RED or YELLOW
ACCESSORIES	DEFLECTOR, VAPOR SEAL



FOAM EQUIPMENT

■ Foam Liquid Tank

This tank stores foam liquid. When a fire occurs, it operates to mix both water and foam liquid to create foam, then works as discharge equipment to put out a fire. There are three different system styles exist depend on how user mixes:

1. Pressure Proportioning System
2. Pressure Side Proportioning System
3. Pump-Proportioning System



YFLT-V(100~900)



YFLT-H(100~1200)

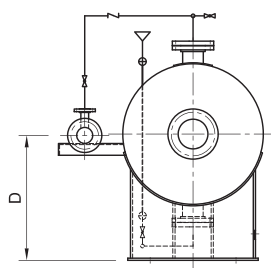
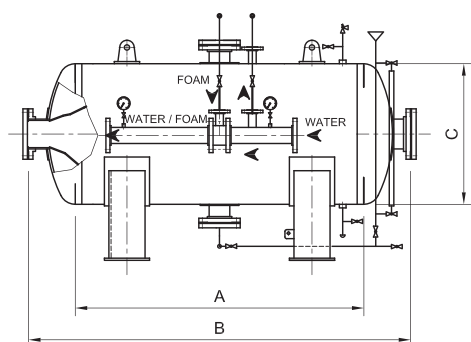
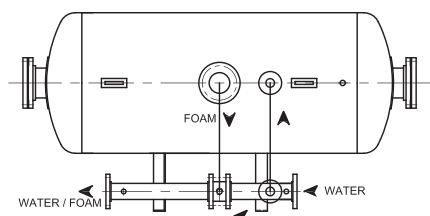
SPECIFICATIONS

TYPE	HORIZONTAL INTERNAL BLADDER TYPE	VERTICAL INTERNAL BLADDER TYPE
MATERIAL	CARBON STEEL / STAINLESS STEEL / BUNA-N RUBBER(BLADDER)	
WORKING PRESSURE	0.7 ~ 0.9 MPa (Max 1.4 MPa)	
DESIGN PRESSURE	1 MPa (Max 1.4 MPa)	
TEST PRESSURE	2 MPa	
PAINTING	RED OR YELLOW EPOXY PAINT COATED (SURFACE) EPOXY URETHANE (INSIDE OF TANK)	
FLANGE	KS STANDARD / ANSI STANDARD	

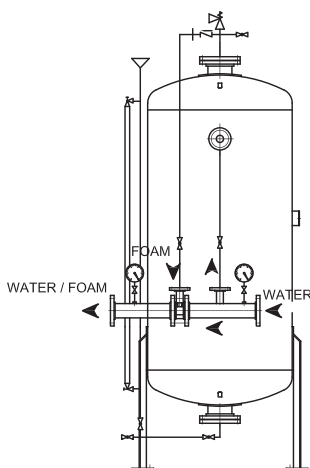
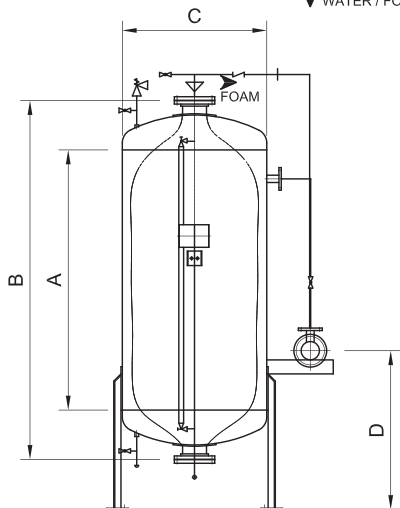
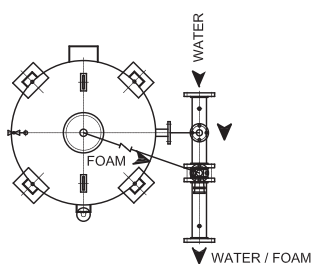
PROPORTIONER CAPACITY

CAPACITY	SIZE		FLOW RATE (RATIO 3%)	A	B	C
	WATER	FOAM				
YPP-65	2-1/2"	1"	400 ~ 1650	60	140	118
YPP-80	3"	1-1/4"	600 ~ 2750	60	155	132
YPP-100	4"	1-1/2"	1600 ~ 4700	68	210	172
YPP-150	6"	2"	2600 ~ 9450	85	230	218
YPP-200	8"	2-1/2"	3500 ~ 18900	90	310	270

FOAM EQUIPMENT



CAPACITY	A	B	C	D
260 LITER	710	1,220	620	700
400 LITER	1,260	1,820	610	700
600 LITER	1,340	1,770	750	800
800 LITER	1,685	2,150	760	1,000
1300 LITER	1,710	2,420	930	1,200
1700 LITER	1,590	2,330	1,100	1,200
2000 LITER	1,900	2,700	1,100	1,200
2400 LITER	1,900	2,570	1,200	1,200
3000 LITER	2,250	2,970	1,230	1,200
3300 LITER	1,900	2,705	1,370	1,200
3500 LITER	2,000	2,760	1,380	1,200
3900 LITER	2,200	2,970	1,400	1,200
4200 LITER	2,400	3,300	1,400	1,200
4600 LITER	2,250	3,100	1,500	1,200
5200 LITER	2,400	3,030	1,550	1,200
5600 LITER	2,400	3,430	1,600	1,200
6200 LITER	2,310	3,950	1,700	1,200
6700 LITER	2,660	4,285	1,670	1,200
7000 LITER	2,810	4,270	1,670	1,200
7400 LITER	3,000	4,650	1,670	1,200
8300 LITER	2,450	3,660	1,900	1,200
10700 LITER	3,350	4,630	1,900	1,200
11600 LITER	3,670	5,100	1,900	1,200
12700 LITER	4,100	5,450	1,900	1,300



CAPACITY	A	B	C	D
260 LITER	710	1,220	620	700
400 LITER	1,260	1,820	610	700
600 LITER	1,340	1,770	750	800
800 LITER	1,685	2,150	760	1,000
1300 LITER	1,710	2,420	930	1,200
1700 LITER	1,590	2,330	1,100	1,200
2000 LITER	1,900	2,700	1,100	1,200
2400 LITER	1,900	2,570	1,200	1,200
3000 LITER	2,250	2,970	1,230	1,200
3300 LITER	1,900	2,705	1,370	1,200
3500 LITER	2,000	2,760	1,380	1,200
3900 LITER	2,200	2,970	1,400	1,200

FOAM EQUIPMENT

■ Riser Strainer

Riser Strainer can helps

The riser strainer filters impurities or residues mixed through the internal screen. Through this, a smooth digestive system is realized.



YPP-(65~200)

Material : Carbon Steel Body with Stainless steel Screen

Flange : ANSI #150 Flange OR 10K KS Flange

Color : RED / YELLOW / GREEN

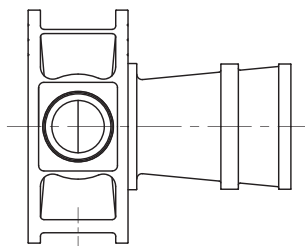
SPECIFICATIONS

MODEL	FLANGE	DIMENSION(mm)			TEST PRESSURE
		A	B	C	
YS-RS-50	2" × 2"	85	210	325	2.0 MPa
YS-RS-65	2.5" × 2.5"	90	230	358	
YS-RS-80	3" × 3"	100	245	393	
YS-RS-100	4" × 4"	100	277	434	
YS-RS-125	5" × 5"	115	330	497	
YS-RS-150	6" × 6"	120	380	580	
YS-RS-200	8" × 8"	140	450	678	
YS-RS-250	10" × 10"	175	556	826	

FOAM EQUIPMENT

■ Pressure Proportioner

Attach to foam tank (bladder type) proportioning foam with water by perfect combination



YPP-(65~200)

SPECIFICATIONS

TYPE	MATERIAL	HYDRO. TEST PRESSURE	APPROVAL
PRESSURE PROPOTIONER	BODY - BRONZE ORIFICE - BRONZE	2.0 Mpa	N/A

MODEL	CONNECTION SIZE		FLOW RATE (RATIO 3%)	A	B	C
	WATER	FOAM				
YPP-65	2-½"	1"	400 ~ 1650	60	140	118
YPP-80	3"	1-¼"	600 ~ 2750	60	155	132
YPP-100	4"	1-½"	1600 ~ 2750	68	210	172
YPP-150	6"	2"	2600 ~ 9450	85	230	218
YPP-200	8"	2-½"	3500 ~ 18900	90	310	270

■ Line Proportioner

Combination with small foam tank, by venturi style it can suction foam concentrate when water flows in to proportioner.



YLP-40



YLP-65



With pick-up hose(ex.)

SPECIFICATIONS

MODEL	CONNECTION SIZE		DISCAHRGE CAPACITY (0.7 MPa)	TEST PRESSURE	MATERIAL
	INLET	OUTLET			
YLP-40	FE40	FE40	160 ~ 190 L/min	2.0 MPa	Bronze
YLP-65	FE65	FE65	360 ~ 410 L/min		

* NH, BS336, GOST, QUICK Coupling

* KFI APPROVAL

FOAM TRAILER

■ Foam Trailer (Electric operated)

Mobile Foam unit that moves by electric power. Because of electric battery base, we can manufacture with customizing very easily.



without monitor type (Handline)

Model	Foam tank size	Spec.
YMFU-E120L	120L	Foam nozzle / Line proportioner / Fire hose / Battery
YMFU-E200L	200L	
YMFU-E300L	300L	
YMFU-E400L	400L	



with monitor type

Model	Foam tank size	Spec.
YFT-M120E	120L	Foam nozzle / Line proportioner / Fire hose / Fire hose-reel / fire monitor
YFT-M200E	200L	
YFT-M400E	400L	
YFT-M800E	800L	

Accessories (Option)

- YMN-D65
- YMN-S65A
- YMN-J65
- YMN-J65F
- FIRE HOSE (Anti-twist)
- Fire monitor (Gear type)
- Line-proportioner



FOAM EQUIPMENT

■ Mobile Foam Trailer

This unit is very compact type but contains all equipment. (Fire hose, Fire hose-reel, Fire monitor(40A), Foam tank 120 L).



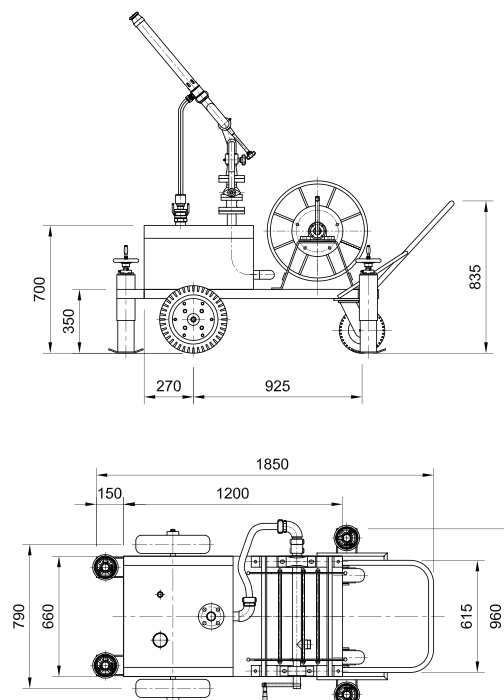
Example photo of use

FOAM EQUIPMENT

Mobile Foam Trailer Spec.

Model	YFT-M120A	YFT-M200A
Type	Compact type	
Size	1735 X 1050 X 1200 (mm)	
Purpose	Mobile foam unit	
Components	Mobile cart, Foam liquid Tank , 40A Fire monitor (Lever type), 40A Foam nozzle (Pick-up type), Hose-reel, Fire hose	
Material	1) Mobile cart & Hose-reel : Carbon steel (or Stainless steel) 2) Foam tank & Monitor : Stainless steel 3) Nozzle : Al-alloy 4) Fire hose : Polyester & TPU	
Foam capacity	120 L	200 L
Shooting range	Estimate 20 m (at 0.35 MPa)	
Flow rate	180 L/min (at 0.3 MPa)	
Foam ratio	3 %	
Fire hose range	less than 50 (m)	
Approval	KFI (40A Fire hose, Foam nozzle)	

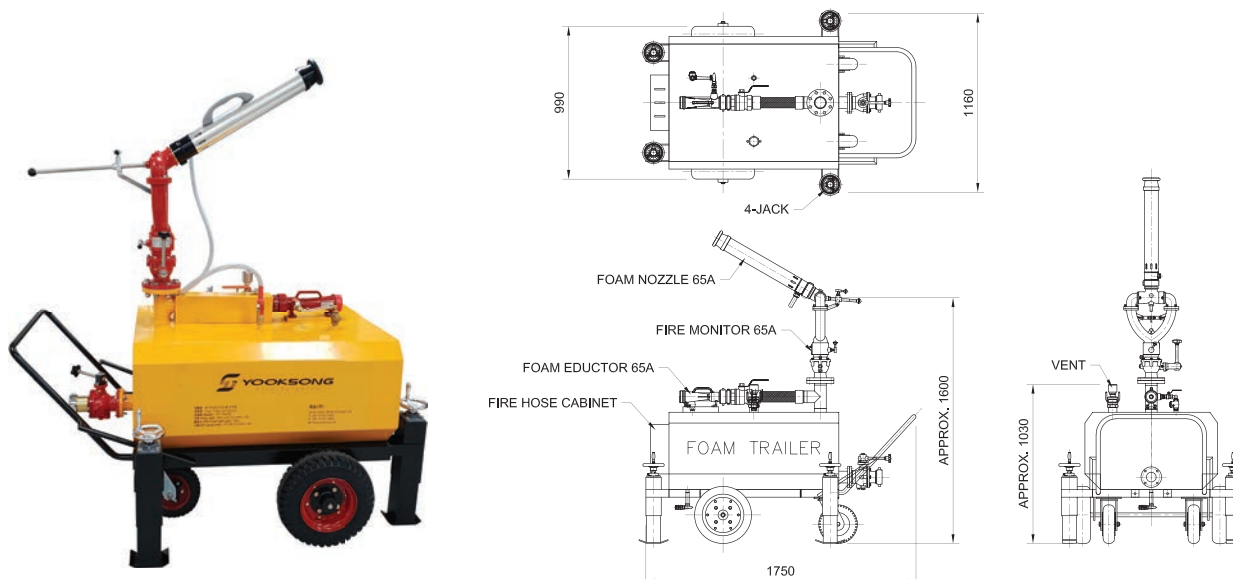
Drawing Section



■ Foam Trailer (Monitor Attached) TYPE – B

A large type of mobile foam trailer with 400 L foam tank. You can use with fire monitor and handline type in the same time.

MODEL	FORM TANK	USEABLE TIME	SHOOTING RANGE	FLOW RATE	INCLUDED
YFT-M400B	400 L	Around 17 min. (0.35 MPa)	30 m (0.35 MPa)	400 LPM (0.3 MPa)	- Fire Monitor (Lever or Gear) - Foam Eductor (65A)



FOAM EQUIPMENT

■ Mobile Foam Unit (200 L)

Very basic type of Mobile foam unit

MODEL	FORM TANK	SHOOTING RANGE	FLOW RATE	INCLUDED
YMFU-120L	120 L	25 m (0.35 MPa)	400 LPM (0.3 MPa)	<ul style="list-style-type: none"> - Fire Hose (65A) 2 EA - Foam Eductor (65A) 1 EA - Air Vent 1 EA - Foam Nozzle (65A) 1 EA
YMFU-150L	150 L			
YMFU-200L	200 L			
YMFU-250L	250 L			
YMFU-300L	300 L			
YMFU-400L	400 L			



■ FOAM TRAILER (Trailer Jack Type)

Foam Trailer for Vehicle Towing



COMPONENTS	MODEL	QUANTITY	MATERIAL
Trailer Body	-	1 Set	Carbon Steel
Foam Tank	400 Liter	1 Set	Stainless Steel
Fire Monitor with Ball Valve	YFM-BG65	1 Set	Bronze or Ductile Cast Iron
Fire Hose	YFH-D65	4 Rolls	Customizing
Foam Nozzle	YHN-F65P	1 EA	Al-alloy
Hose Wrench	YHS-65T	2 EA	Al-alloy



FOAM EQUIPMENT

■ Foam Liquid (AFFF / AR-AFFF 3% or 6%)

AFFF 3% is eco-friendly foam product. It is made with eco-friendly hydrocarbon and surfactant, natural polymers, solvents and fluorocarbon.

- AFFF is usually used to put out a gas, oil, or diesel fire.
- Mixing ratio would be 3% of AFFF and 97% of water.
- Penetration ability is outstanding and high adaptation ability on fresh water or seawater.



SPECIFICATIONS

Apperance	Density (20℃)	pH	Viscosity at 86°F (30℃)	Pour Point
Yellow pale color	1.06g/ml±0.02	7.0 - 8.0	less than 10cPs	-22.5

Applications

AFFF 3% and 6% has excellent hydroplaning to put out a fire. It has high-sealing ability for oil mist where it usually evaporates and it also covers large area.

Where to use

- Oil tank (or storage)
- Chemical factory (or storage)
- Oil transfer system
- Oil tank on a ship (or terminal)
- Areas where flammable liquid are used
- Automobile

Approval

KFI (Korea Fire Institue)

FOAM EQUIPMENT

■ Foam Liquid (Alcohol foam 3%)

Alcohol foam (3%) is excellent to use on polar solvents and hydrocarbon fuel fire. Moreover, penetration ability is outstanding and high adaptation ability on fresh water or seawater.

- Excellent fire-extinguishing foam product



SPECIFICATIONS

Apperance	Density (20℃)	pH(20℃)	Viscosity at 86°F (30℃)	Pour Point
Dark brown color	1.07g/ml±0.02	7.0 - 8.0	less than 20cPs	-13

Applications

Alcohol foam (3%) has excellent seal ability to oil mist, where it put out a fire strongly and safely

- For carbonized fuel fire, it creates excellent water screen formation to put out a fire.
- For polar solvents fire, it creates strong polymer membrane to put out a fire.

Where to use

- Oil tank (or storage)
- Chemical factory (or storage)
- Oil transfer system
- Oil tank on a ship (or terminal)
- Areas where flammable liquid are used
- Automobile

Approval

KFI (Korea Fire Institue)

HIGH PRESSURE FIRE FIGHTING EQUIPMENT



High Pressure Fire Hose

High Pressure Y-Coupling (2-Ways Ball Valve)

High Pressure Y-Coupling (3-Ways Ball Valve)

Anti-Twist Fire Nozzle

High Pressure Intermediate Coupling (Rotation Type)

High Pressure Check Valve

Special A-Frame

HIGH PRESSURE FIRE FIGHTING EQUIPMENT

High Pressure Fire Hose

It is a special fire hose to use when a massive fire occurs such as mountain fire, forest fire, high-rise building fire, and tunnel fire. This firefighting equipment is able to hold work-pressure more than 4.0 MPa. A high-pressure fire hose is double jacket made and has high durability, enhanced usability, safe, and speed of deployment due to our anti-twist coupling.

- To recognize fire hose in terrible condition, we have attached axial light and reflective sticker.
- 2013~2018 Seoul Metropolitan Fire & Disaster Headquarters choosed the best Item for the Forest fire fighting.

SPECIFICATIONS



YFH-D25H



YFH-D40H



YFH-D65H

SIZE	공통사항
Size : FE25 (1") X 30 (m) (15 ~ 100 (m) Can be manufacture)	
Size : FE40 (1-1/2") X 30 (m) (15 ~ 100 (m) Can be manufacture)	Material : TPU (Hose) Al-alloy (Coupling) Pressure : Use – 4.0 MPa Test – 6.0 MPa Burst – 8.0 MPa Attached with luminous and reflective sticker (Easy identification and securing of retreat) Products passed KFI commissioned test BS336, GOST, PT, NH, CAM-LOCK MACHINO coupling available.
Size : FE65 (1-1/2") X 30 (m) (15 ~ 100 (m) Can be manufacture)	

HIGH PRESSURE FIRE FIGHTING EQUIPMENT

■ High Pressure Y-Coupling (2-Ways Ball Valve)

It is an item to use when a massive fire occurs such as mountain and high-rise building fire. It is able to hold up to 3.0 MPa pressure. This coupling is usually used when operation needs to spread out two-ways to put out a fire and a product is made with special aluminum alloy that prevents shatter phenomenon.

- Ball valve open and closes smoothly, where it able to use a product easier



YYC-40



YYC-65A

SPECIFICATIONS

MODEL	INLET SIZE	OUTLET SIZE	USE PRESSURE	MATERIAL	APPROVAL
YYC-40	FE40	Two(2) X FE25 (1")	3.0 MPa	AL-ALLOY	KFI
YYC-65A	FE65	Two(2) X FE40 (1-1/2")			

■ High Pressure Y-Coupling (3-Ways Ball Valve)

It is basically same as above Y-Coupling (2-Ways Ball Valve), however, there is one more function attached compare to Y-coupling. The size of 65A fire hose can be connected with cross-coupling.



YYC-65C3

SPECIFICATIONS

Inlet Size : FE65 (2-1/2")

Outlet Size : Two(2) - FE40 (1-1/2") X One(1) - FE65 (2-1/2")

Use Pressure : 3.0 MPa

Material : Al-alloy

HIGH PRESSURE FIRE FIGHTING EQUIPMENT

■ Anti-Twist Swivel Fire Nozzle

Basic feature is same as ordinary water nozzle such as straight and fog-spray modes, but this product contains special function. When it connects to fire hose, it prevents twist phenomenon. This nozzle has anti-twist function and can be used in special situation, for example, it could be useful to put out forest fire.

- Compare to regular anti-twist nozzle, this is for high-pressure
- Excellent to hold and discharge high-pressure water
- Patented product (Korea)



YHN-25AT



YHN-40AT

SPECIFICATIONS

SIZE	FE25 (1")	FE40 (2½")
FLOW RATE (0.7 MPa)	Over 310 L/min	Over 320 L/min
LENGTH (mm)	130	194
WEIGHT (kg)	0.36	0.7
MATERIAL	AL-ALLOY	
APPROVAL	KFI	

■ High Pressure Intermediate Coupling (Rotation Type)

It is able to bear up against more than 4.0 MPa high-pressure and easy to connect with other equipment because of rotating system.



YRC-MFR(40X25)



YRC-MFR(65X40)

SPECIFICATIONS

MODEL	SIZE	USE PRESSURE	MATERIAL	APPROVAL
YRC-MFR(40X25)	FE40(F) X FE25(M)	4.0 MPa	AL-ALLOY	KFI
YRC-MFR(65X40)	FE65(F) X FE40(M)			

HIGH PRESSURE FIRE FIGHTING EQUIPMENT

■ High Pressure Check Valve

This check valve is used for backdraft prevention of water due to back pressure when pump system stops. It is built to bear up against more than 4.0 MPa high pressure and product contains pressure gauge for user to see pressure easily.



YCV-40



YCV-65

SPECIFICATIONS

MODEL	YCV-40	YCV-65
SIZE	FE40 (1½")	FE65 (2½")
USE PRESSURE	4.0 MPa	
MATERIAL	AL-ALLOY	

■ Special A-Frame

When massive fire occurs, with this A-frame, people can transfer supplies faster and easier on foot. It is usually used for a place where automobile or any other transfer are not allowed to enter. A product itself has light weight and able to carry up to 150kg.



YSI-AF

SPECIFICATIONS

Maximum Allowable Load : 150 kg

Material : Al-alloy (Frame), Artificial Leather (Seat)

Weight : 2.7 kg

PORTABLE FIRE EXTINGUISHER



HALOTRON-1 Portable Fire Extinguisher 2.5/3.3 kg

HFC-236fa Portable Fire Extinguisher 3 kg

PORTABLE FIRE EXTINGUISHER

■ Halotron-1 Portable Fire Extinguisher 2.5 Kg / 3.5 Kg



YSFE-H2.5



YSFE-H3.5

SPECIFICATIONS

Model	YSFE-H2.5	YSFE-H3.5
Certificated Number	Hydrogen 08-33	Hydrogen 05-12-1
Agent	HCFC BLEND B	
Agent's Weight	2.5kg	3.5kg
Total weight	4.5kg	6.4kg
Ability level	1A, 2B, C	1A, 3B, C
Use time	10sec	15sec
Use distance	3 ~ 4m	

Use temperature	-20 ~ 40°C	
Capacity	2.4L	4L
Pressure	6.4~10.4kg/cm ²	
Accumulator gas	Argon	
Safety valve operating temperature	72°C	
Container material	Stainless steel	Aluminium
Container test pressure	25.5kg/cm ²	24.5kg/cm ²

■ HFC-236fa Portable Fire Extinguisher 3 kg

SPECIFICATIONS

Model	YFE-FC36		
KFI No.	Hydrogen 21-8	Distance	3~4 m
Agent	HFC-236fa	Use temperature	-20~40 °C
Agent Weight	3.0 kg	Pressure	6.4~10.4 kg/cm ²
Total Weight	5.6 kg	Accumulator gas	N ₂
Ability	1A,1B,C	Container material	Stainless steel
Use time	13 sec.		



YFE-FC36

PORTABLE FIRE EXTINGUISHER

■ Dry powder fire extinguisher



Spec.

Model	PI 0.7K	PI 1.5K	PI 2.5K	PI 3.3K
Working pressure	0.7~0.9 MPa	0.77~0.96 MPa	0.77~0.96 MPa	0.77~0.96 MPa
Working Temp.	-20~40℃	-20~40℃	-20~40℃	-20~40℃
Class	A1B1C	A2B3C	A2B4C	A3B5C
Powder type	NH ₄ H ₂ PO ₄	NH ₄ H ₂ PO ₄	NH ₄ H ₂ PO ₄	NH ₄ H ₂ PO ₄
Total weight	1.37 kg	2.63 kg	3.9 kg	5.0 kg
Powder weight	0.7 kg	1.5 kg	2.5 kg	3.3 kg
Working time	8 s	9 s	9 s	11 s
Range	2~4 m	3~4 m	4~5 m	4~6 m
Height	296 mm	342 mm	377 mm	401 mm
Diameter(∅)	83	110	130	144

DESCENDING LIFE LINE SYSTEM



Descending Life Line

Descending Life Line Hanger

Descending Life Line Foot Board

DESCENDING LIFE LINE SYSTEM

■ Descending Life Line

For a safe escape, it is assembled traditional brake lining. It is made with excellent corrosion resistance, abrasion resistance, and water-proof. The safety of the coefficient of friction is high while temperature rises, and then a product is easy to use where children and elder are able to escape from a building without any help of other. The length of rope is different depending on the number of stories.

• Mainly installed in apartment, hospital, school, hotel, motel, and etc.,



SPECIFICATIONS

MODEL	YDL - 01
WEIGHT	5.3 kg (BASED ON 15m) PER 3m ± 242 g
DESCENDING SPEED	70~100 cm/sec.
TEST LOAD	390 kg
WORKING LOAD	150 kg
MAX. NUMBER OF USER	1 person (1 at a time, repeatedly useable)
APPROVAL	KFI APPROVED



SPECIFICATIONS

MODEL	YDL-02
WEIGHT	5.3 kg (BASED ON 15m) PER 3m ± 242 g
DESCENDING SPEED	70~100 cm/sec.
TEST LOAD	390 kg
WORKING LOAD	150 kg
MAX. NUMBER OF USER	1 person
APPROVAL	KFI APPROVED

EACH FLOOR FOR LIFE LINE'S LENGTH

3rd	9 m
4th	12 m
5th	15 m
6th	18 m
7th	21 m
8th	24 m
9th	27 m
10th	30 m
11th	33 m
12th	36 m
13th	39 m
14th	42 m
15th	45 m

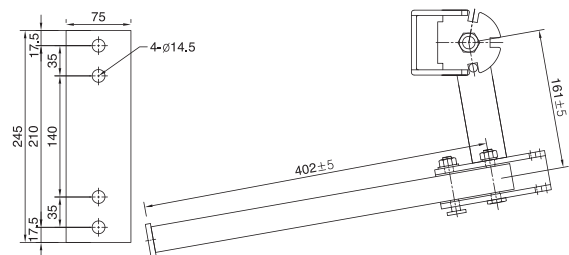
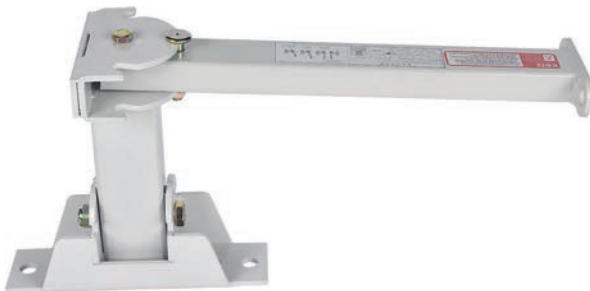
DESCENDING LIFE LINE SYSTEM

■ Descending Life Line Hanger

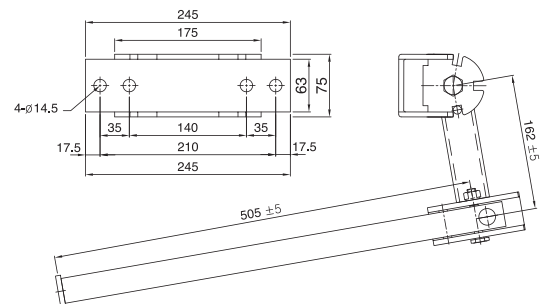
It is a hanger to hook life line when people need to escape from a building. It can be installed any column or wall. In ordinary day a product is folded down for storage, but when necessary a person must follow the direction to install to escape.

• Installation followed by direction is easy

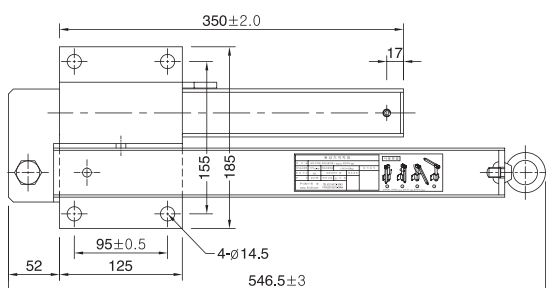
YDH-01 Side back attached type (2 folded)



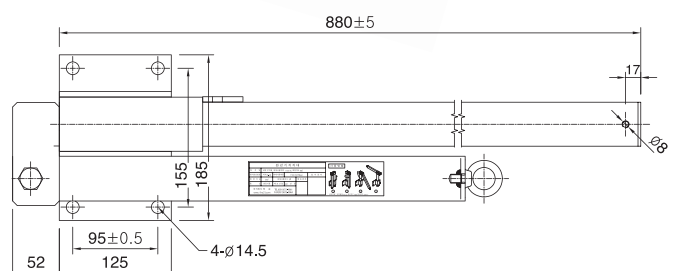
YDH-02 Side back attached type (2 folded) (Long)



YDH-03 Under window attached type



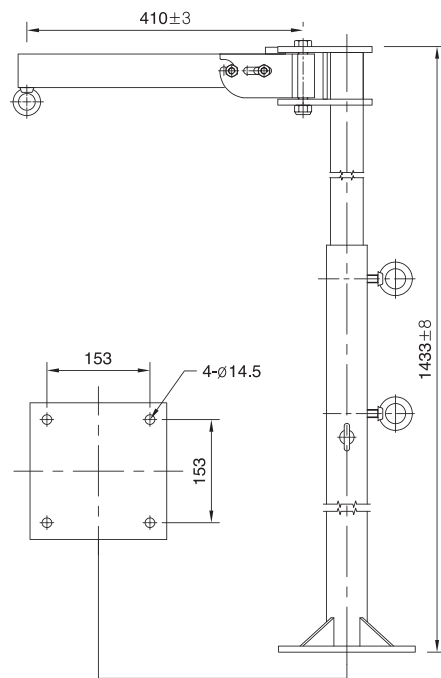
YDH-04 Under window attached type (Long)



DESCENDING LIFE LINE SYSTEM

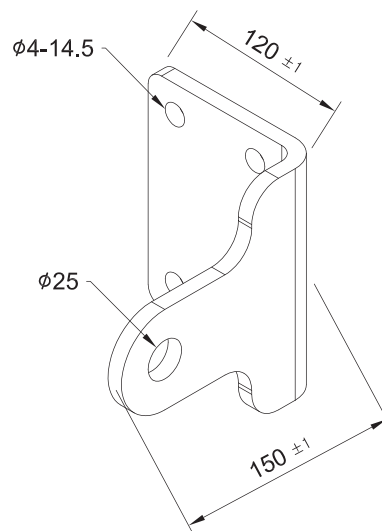
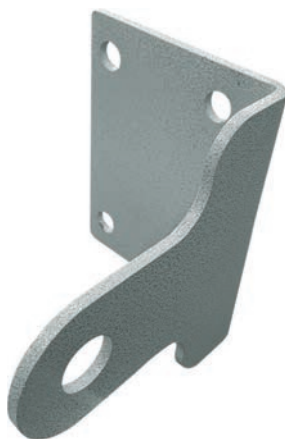
■ Descending Life Line Hanger

YDH-05 Floor attached type (Stand type)



YDH-06 Outdoor type

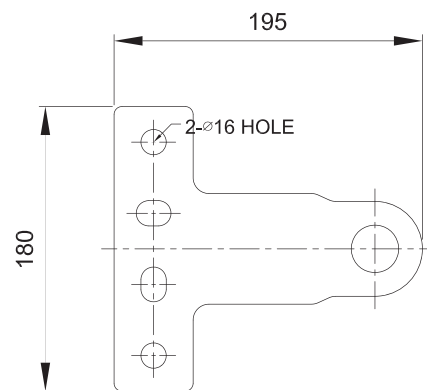
A product is for a building outer wall. People might get worry about corrosiveness due to rain, but our product body is STS material made which is anti-corrosiveness. In addition, a product is powder coated to strength the anti-corrosiveness even further where people do not have to worry about the corrosion.



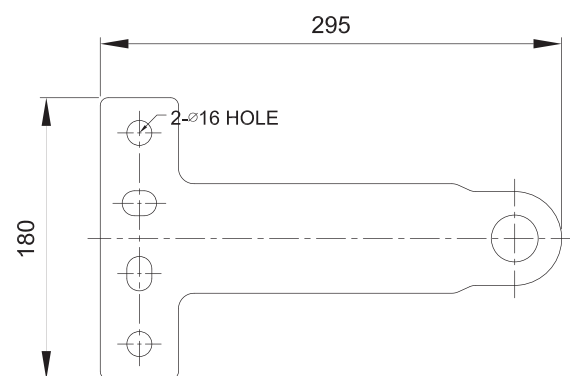
DESCENDING LIFE LINE SYSTEM

■ Descending Life Line Hanger

YDH-08 Outdoor install (T-type)



YDH-09 Outdoor install (T-type)(Long type)



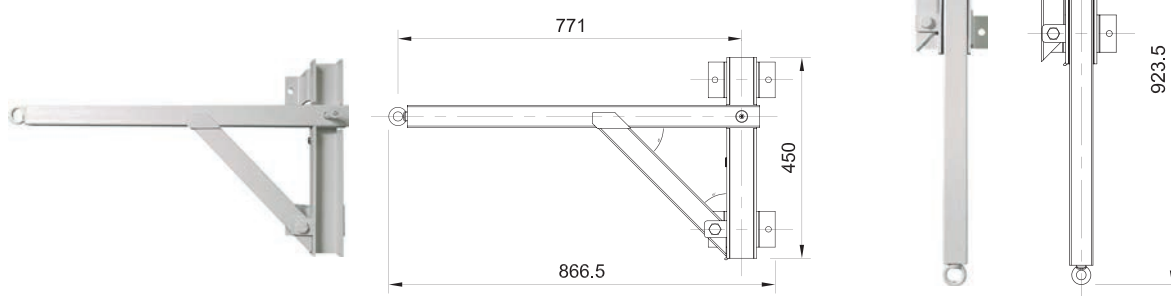
DESCENDING LIFE LINE SYSTEM

■ Descending Life Line Hanger

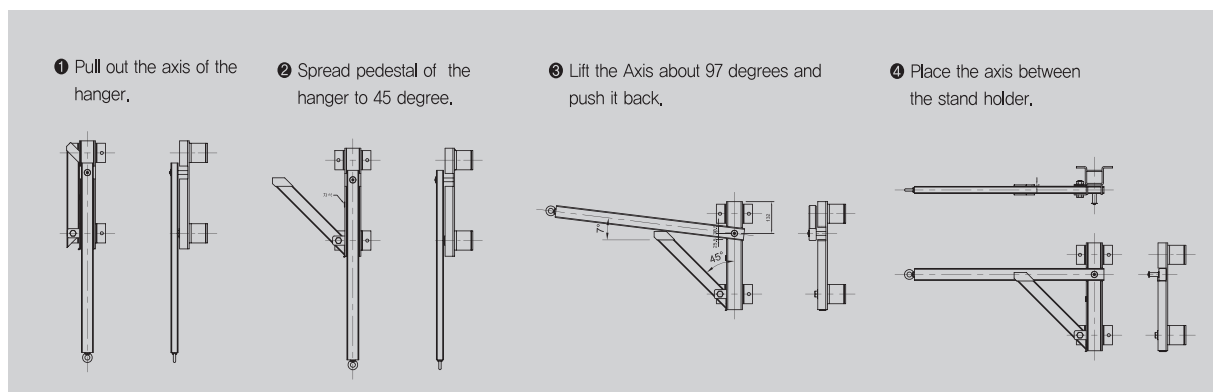
YDH-07 Super long type

Longer version of descending life line hanger is 200mm longer than original version.

- It is used in specialized building
- Balanced between weight and length



How to use



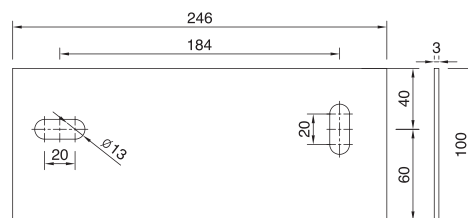
■ Descending Life Line Foot Board

YDF-01 2 hole type

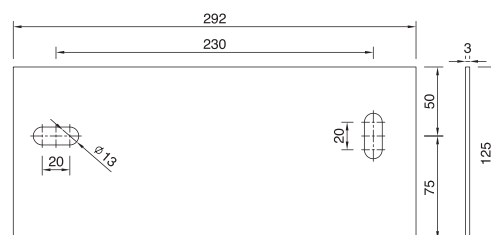
YDF-02 3 hole type



It is installed when the bottom of an opening is 1.2m from the ground to use descending life line and hanger safely.



SIZE : 254(LENGTH) X 183(HEIGHT)



SIZE : 300(LENGTH) X 200(HEIGHT)

FIRE PUMP ACCESSORIES



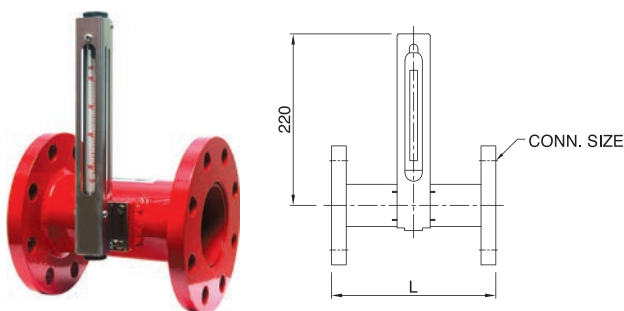
Flow Meter (For Fire Piping)
Electric Pressure Switch
Water Spray Nozzle (Spiral Type)

SPECIAL FIRE EQUIPMENT

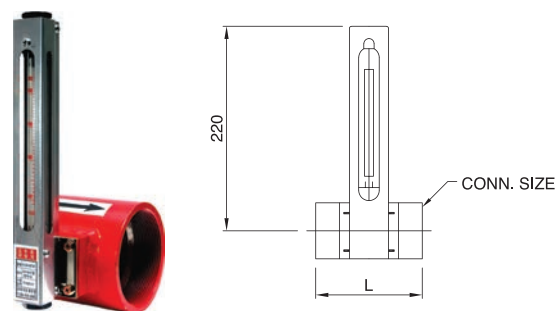
■ FLOW METER

It is a differential pressure area equipment used the Bernoulli's law and the law of conservation of mass to measure a flow amount. In addition, item is built to hold high temperature, high pressure, and overload.

- A product's installation is easy to follow
- A product's surface is smooth to prevent pressure loss



YWM-F(40~150) (FLANGE TYPE)



YWM-T(32~80) (THREAD TYPE)

SPECIFICATIONS

Type	Flange type	Threaded type
Apply for	Water (물)	
Working pressure	Below 1.0 MPa OR 2.0 MPa	
Test pressure	1,5 MPa	
Connection method	Flange	Threaded
Working temp.	Below 80 °c	
Material	Body (SGP / SS400)	
	Meter BASE (SS400)	
	Taper tube (P,C)	
Error range	± 2 %	

DIMENSION

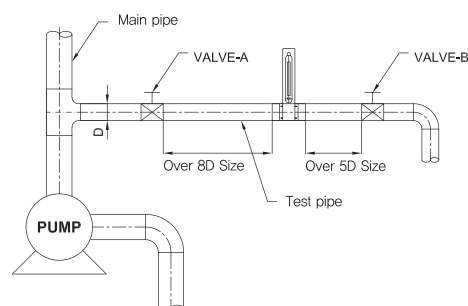
SIZE	Threaded TYPE		FLANGE TYPE	
	L		L	CODE
32A	80	PT THREADED	200	KS B 1511 10K FF FLANGE
40A	90		200	
50A	90		200	
65A	100		200	
80A	100		200	
100A			200	
125A			200	
150A			200	

SPECIFICATIONS BY EACH MODEL

Model	Size		Flow rates (ℓ /min)	Gradation per each level (ℓ)	Connection method
	mm	Inch			
YWM-T32	32	1-1/4"	70~360	10	Threaded
YSFM-T40	40	1-1/2"	110~550	10	Threaded
YWM-F40					Flange
YWM-T50	50	2"	220~1,100	10	Threaded
YWM-F50					Flange
YWM-T65	65	2-1/2"	450~2,200	50	Threaded
YWM-F65					Flange
YWM-T80	80	3"	700~3,300	100	Threaded
YWM-F80					Flange
YWM-F100	100		900~4,500	100	Flange
YWM-F125	125		1,200~6,000	100	Flange
YWM-F150	150		2,000~10,00	200	Flange

The figure on the right is an example of how to install a flow meter.

1. A straight pipe with a certain distance is required when installing the flow meter.
2. The diameter of the main pipe and the test pipe need not be the same. However, the test piping and flow meter specifications must be the same.
3. In order to measure the flow accurately, it is necessary to check whether the inside is cleaned or not to ensure smooth fluid flow.
4. When measuring the flow rate, refer to the upper part of the float.



FIRE PUMP ACCESSORIES

■ Electric Pressure Switch

The electronic pressure switch is a perfect complement to the existing pressure chamber.

The digital display can more accurately measure the value. (Can be set to 2 decimal places)

It can be installed even if the installation space is narrow, and it can be easily installed by screwing.



YEP-10K



YEP-20K

Model	YEP-10K		YEP-20K	
Use pressure	10 kg/cm² (1.0 MPa)		20 kg/cm² (2.0 MPa)	
Rated voltage	DC 24V	Rated current		80 mA (Max)
Size	163 X 226 X 52 (mm)			

What is good?

- 1) Easy to set Pump start / stop and accurate (setting to 2 decimal places)
- 2) Can be installed in a small space
- 3) Built-in termination resistor
- 4) Pump pressure indication does not require a pressure gauge.
- 5) DC 24V
- 6) 1 Switch can control 5 pumps

Notice

- 1) Disconnection of DC24V power supply is prohibited during normal operation.
- 2) When setting the pressure, remove the inside air with the test valve and proceed.
- 3) If pump operation is continued due to maintenance of automatic contact, etc., take necessary measures by using contact relay.

How to check

- 1) Store in a dry place with low humidity
- 2) When installing outdoors, cover with a roof to prevent rain, and to prevent frost in winter.
- 3) After installation, be sure to check at least once a year.

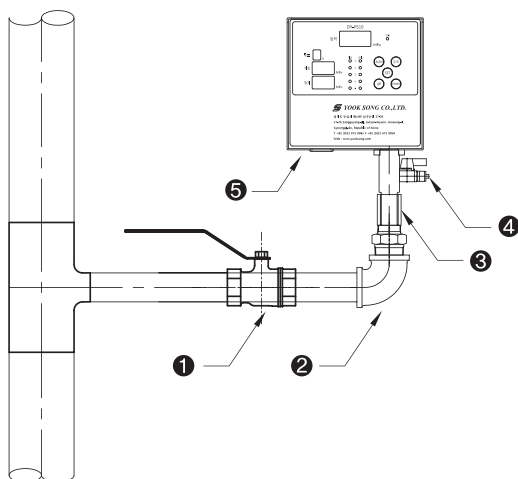
FIRE PUMP ACCESSORIES

SPECIFICATIONS

MODEL	USE PRESSURE RANGE	PUMP START PRESSURE RANGE	PUMP STOP PRESSURE RANGE
YEP-10K	0.00 ~ 1.00 MPa	0.11 ~ 0.99 MPa	0.12 ~ 1.00 MPa
YEP-20K	0.00 ~ 2.00 MPa	0.11 ~ 1.99 MPa	0.12 ~ 2.00 MPa

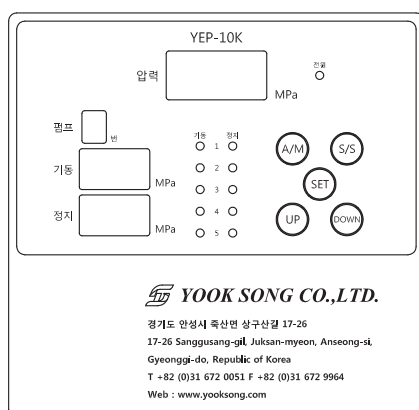
MATERIAL	BODY	STS304 (KS D 3706)
	PRESSURE INDICATOR	

Drawing of the installation (10 K, 20 K)



Component List

- ❶ 25A Ball valve
- ❷ 25A Elbow
- ❸ 25A X 15A Bushing
- ❹ Test valve
- ❺ Switch



How to set

- 1) Push SET UP, DOWN together for more than 3 seconds.
- 2) When pump display flashing, push UP or Down
(You can change the pump)
- 3) When you finish to select pump, push the SET key, then push UP, DOWN button for setting pump start pressure
- 4) Push SET key one more time, then setting pump stop pressure by UP, DOWN button
- 5) When you finish to setting, push SET button for 3 seconds, then setting will be save.

FIRE PUMP ACCESSORIES

■ Water Spray Nozzle (Spiral Type)

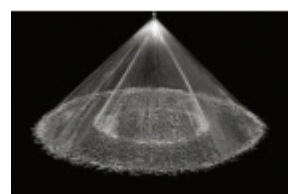
TYPE : SPIRAL TYPE

SPRAY PATTERN : FULL CONE TYPE

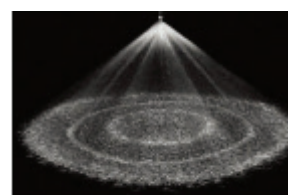
SIZE : NPT or PT 1/2", 3/4", 1", 1-1/2"

SPRAY ANGLE : 90° / 120°

MATERIAL : BRASS w/ Ni-Cr Plated



Full Cone 90°, SPIRAL



Full Cone 120°, SPIRAL

SPECIFICATIONS

Model	Size	Flow Rate (0.35 MPa)	Remarks
YSN-S15B	1/2"	40 LPM	KFI APPROVED
YSN-S15C		65 LPM	
YSN-S15D		80 LPM	
YSN-S15E		100 LPM	
YSN-S15F		120 LPM	
YSN-S15G		140 LPM	
YSN-S20A	3/4"	100 LPM	
YSN-S20B		140 LPM	
YSN-S20C		180 LPM	
YSN-S25A	1"	180 LPM	
YSN-S25B		285 LPM	
YSN-S40A	1-1/2"	400 LPM	
YSN-S40B		550 LPM	
YSN-S40C		720 LPM	

SPECIAL FIRE EQUIPMENT

Hydrant Wrench

It is a wrench that is used to open and close the outlet of outdoor hydrant.



YHW-100



YHW-100W (Latch type)



YHW-T1

MODEL	LENGTH (mm)	MATERIAL	APPLICATION
YHW-100	243.5	CAST IRON	OUTDOOR HYDRANT
YHW-100W	200	CAST IRON	OUTDOOR HYDRANT
YHW-T1	1055	CARBON STEEL	UNDERGROUND HYDRANT & GATE VALVE

Hose Wrench



YHS-65T

Emergency Hammer



Sight Glass

It is a product for the end test piping of an installed pipe of an alarm valve.

It can be used by connecting to the drainage line at the bottom of the alarm valve drain valve, and visually checking whether the drain valve is leaking.



YSG-25

MODEL	SIZE	CONNECTION SIZE	MATERIAL
YSG-25	1" (25 mm)	IN(MALE 1" (25 mm) X OUT FEMALE 3/4" (20 mm)	BRONZE

Pick-up Hose

Pick-up hose is for suction foam concentrate from the drum.

Length of the hose is custom order.



YPH-01

MODEL	SIZE	LENGTH
YPH-01	PT 3/4"	CUSTOM ORDER

SCBA / FIRE-FIGHTING SUIT / MASK



RESPIRATORY PROTECTIVE EQUIPMENT

HS680E

PROTECTIVE SAFETY SUIT

HS1203SN

HS1203N

RESPIRATORY GAS MASK

HS119FC

RESPIRATORY PROTECTIVE EQUIPMENT

■ HS680E CE

HS680E is designed for applications where simplicity and easy to operate in environmental conditions by first responders, municipal and industrial fire-fighters, and it can be stored to prevent of emergency incident in industrial site. HS680E is one of the lightest SCBA in respirator system, it perfectly use with easy and rapid don and doff. It provides wide range of air cylinder due to its condition of application.

FEATURES



FBO system

- Allowing activation of SCBA without free flow.
- Second stage regulator activates pneumatic system by first breath.



Integrated regulator

- First stage regulator integrated with alarm.
- Simplify design guarantee for low cost of ownership to maintain.



Low cost ownership

- The lowest profile with intense focus on the basic purposes of SCBA.
- Support for low cost of maintenance.

COMPONENTS

Basic components



Face-piece



Air cylinder



Harness



SCBA Carrier

Optional components

SPECIFICATIONS

Data sheet		6.8liter	9.0liter
Service time		45 min	60 min
Weight		8.5kg(W/O Air)	10kg(W/O Air)
Cylinder	Material	Carbon Composite	Carbon Composite
	Water Vol.	Approx. 6.8liter	Approx. 9.0liter
	Max. Air Capacity	2,040liter	2,790liter
	Weight	3.6Kg	5.0kg
	Service pressure(FP)	300bar	310bar
	Test pressure(TP)	500bar	517bar
	Standard	CE	CE

PROTECTIVE SAFETY SUIT

■ HS1203SN CE

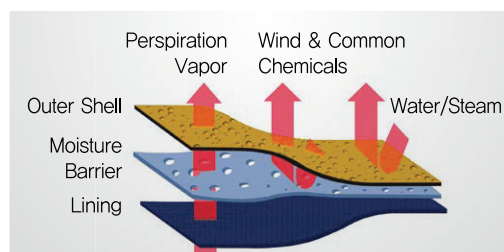
- HS1203SN optimize the complex interface with Personal Protective Equipment, and minimize interference for fire-fighter's maneuverability.
- HS1203SN is made of Aramid textile.
- HS1203SN provide enhanced protection against flame and radiation.



MOISTURE BARRIERS

Moisture barrier with PTFE film layer support superior resistance to liquid penetration and allowing sweat to be emitted outward

- Reduce heat stress through improved breathability
- Excellent water proof function
- Prevents common chemicals, blood-infected viruses, and moisture
- Enhanced durability, heat resistance and flame resistance



FEATURES



Contoured collar

- Ergonomically designed contoured collar and engaged throat tab improve comfort, interface better with SCBA and deliver continuous thermal and moisture protection.



Overhand wristlets

- Overhand knitting wristlets support extra protection from heat radiation.



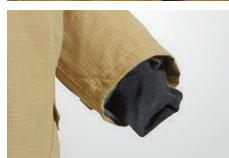
Ankle fasteners

- Zipper tight fasteners provide limited protection from heat, flame, and other hazards.



Ergonomic design

- Special design in shoulder and sleeve areas allows higher level of freedom of movement.



Detachable suspender

- Elastic suspender helps fire-fighters conserve energy by moving the weight of the trousers from the shoulder to the hips.
- Fully detachable elastic suspender support easy maintenance.



Detachable inner suit

- Outer Shell can be detached from lining.
- Reduce maintenance cost.

SPECIFICATIONS

Data sheet		HS1203SN
Material	Outer Shell	Meta Aramid + Para-Aramid
	Moisture Barrier	PTFE + Aramid
	Lining	Aramid fabric
Color		Gold
Weight		Less than 4.0kg

Certification: CE(EN469:2005)

PROTECTIVE SAFETY SUIT

■ HS1203N CE

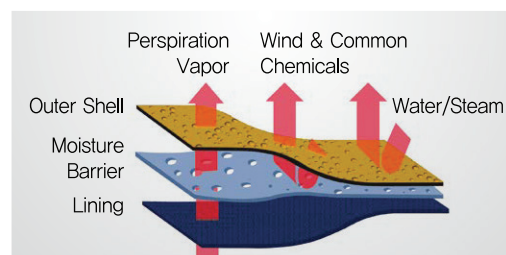
- HS1203N allows fire-fighters to conserve energy and fully concentrate of saving life in various incident circumstances.
- HS1203N is made of 100% aromatic Polyamide textiles, and it is specially designed with innovative use of multiple thermal layer with excellent ventilation breathability, and flexibility extend effective fire-fighting effects by reduce heat stress.



MOISTURE BARRIERS

Moisture barrier with superior resistance to liquid penetration and allowing sweat to be emitted outward beyond the requirements of EN469.

- Reduce heat stress through improved breathability
- Excellent water proof function
- Prevents common chemicals , blood-infected viruses, and moisture
- Enhanced durability, heat resistance and flame resistance



FEATURES



Contoured collar

- Contoured collar and engaged throat tab provide limited protection from heat, flame, and other hazards.



Overhand wristlets

- Overhand knitting wristlets support extra protection from heat radiation.



Ergonomic design

- Special design in shoulder and sleeve areas allows higher level of freedom of movement.



Elastic suspender

- Elastic suspender and special braces to help fire-fighters conserve energy by moving the weight of the trousers from the shoulder to the hips.

SPECIFICATIONS

Data sheet		hS1203N
Material	Outer Shell	Meta Aramid
	Moisture Barrier	E-PTFE + Aramid
	Lining	Aramid
Color		Black, Gray, Red, Yellow
Weight		Less than 3.0kg

Certification: CE(EN469:2005)

RESPIRATORY GAS MASK

■ HS119FC



- HS119FC Fire Escape hood protects civilian against fire gases. hS119FC provides short-term protection against eye irritation and breathing hazardous fumes released from burning plastic materials during evacuation.
- A filter respirator combined with a protective hood with a polycarbonate large visor is treated with an anti-fog coating which keeps wearer's field of vision clear.
- The compact design makes it easy to carry and store.



COMPONENTS

Basic components



Mask with filter



Carton box

FEATURES



Protection against fire gases

- Fully meets the requirement of EN403
- ※ Tested with 6 fire gases (4 from EN403:2004 and plus 2 gases)
- Full head fire escape hood for both respiratory and eye protection

Easy don & doff

- Adopted self-sealing neck cover
- Ready to use in only 3 steps
- Ready to use in 10s without training
- Universal size



Protection against heat radiation

- Over 90% heat reflection from the violent flame during evacuation

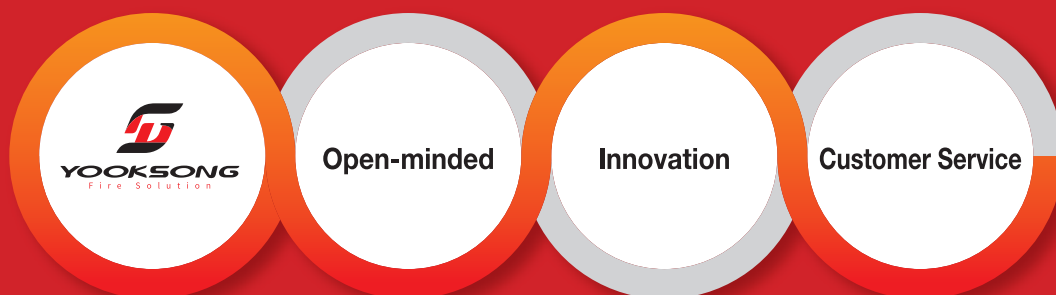
User friendly

- Large visor with special anti-fog coating for clear vision
- Designed for user comfort and a secure fit in the event of an emergency

SPECIFICATIONS

Data sheet	HS1203SN	
Fire-related gases	Propenal	> 15min
	Hydrogen Chloride	> 15min
	Hydrogen Cyanide	> 15min
	Cyclohexane	> 15min
	Sulfur Dioxide	> 15min
	Carbon Monoxide	> 15min

Certification: CE(EN403:2004) & KS M 6766 Fire escape hood, Korea





YOOKSONG CO., LTD.

Main Office : 17-26, Sanggusan-gil, Juksan-myeon Anseong-si, Gyeonggi-do, Korea

T +82-(0)31-672-0051 **F** +82-(0)31-672-9964 **H** www.yooksong.com

Incheon Office : 31, Inju-daero 623beon-gil, Namdong-gu, Incheon

T +82-(0)32-431-0051 **F** +82-(0)32-431-9964